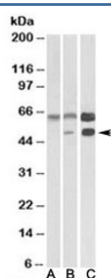


## CAMK2A Antibody (R35142)

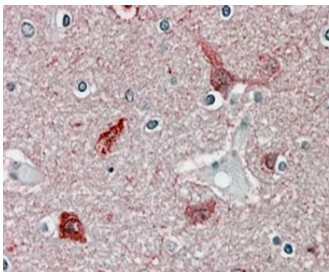
Catalog No.	Formulation	Size
R35142-100UG	0.5 mg/ml in 1X TBS, pH7.3, with 0.5% BSA (US sourced) and 0.02% sodium azide	100 ug

[Bulk quote request](#)

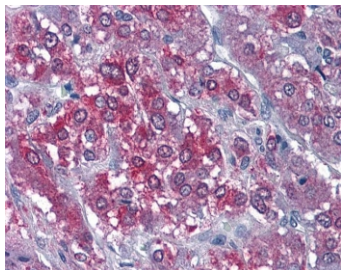
Availability	1-3 business days
Species Reactivity	Human, Mouse
Predicted Reactivity	Dog, Rat
Format	Antigen affinity purified
Host	Goat
Clonality	Polyclonal (goat origin)
Isotype	Goat Ig
Purity	Antigen affinity
Gene ID	815
Localization	Cell junction, cytoplasmic
Applications	Western Blot : 0.3-1ug/ml Immunohistochemistry (FFPE) : 3-6ug/ml ELISA (peptide) LOD : 1:64000
Limitations	This CAMK2A antibody is available for research use only.



Western blot testing of human cerebellum [A], mouse brain [B], and rat brain [C] lysates with CAMK2A antibody at 0.3ug/ml. Predicted molecular weight: ~54 kDa. An additional ~65 kDa band is often observed.



IHC staining of FFPE human brain cortex with CAMK2A antibody at 4ug/ml. HIER: steamed with pH6 citrate buffer, AP-staining.



IHC staining of FFPE human adrenal gland with CAMK2A antibody at 3.75ug/ml. HIER: steamed with pH6 citrate buffer, AP-staining.

## Description

Additional name(s) for this target protein: Calcium/calmodulin-dependent protein kinase (CaM kinase) II alpha

## Application Notes

Optimal dilution of the CAMK2A antibody should be determined by the researcher.

## Immunogen

Amino acids PRTAQSEETRVWHR were used as the immunogen for this CAMK2A antibody.

## Storage

Aliquot and store the CAMK2A antibody at -20oC.