

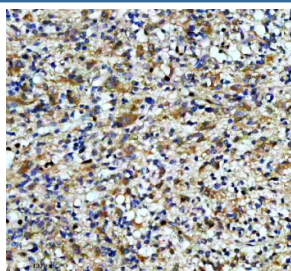
## CAMK2 Antibody / CAMK II / Forms A/B/D/G [clone 27C04] (RQ8904)

Catalog No.	Formulation	Size
RQ8904	Antibody in PBS with 0.02% sodium azide, 50% glycerol and 0.4-0.5mg/ml BSA	100 ul

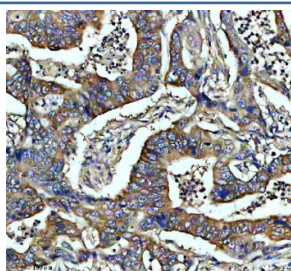
Recombinant **RABBIT MONOCLONAL**

[Bulk quote request](#)

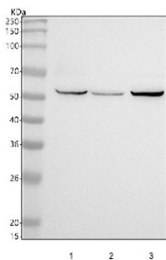
Availability	1-3 days
Species Reactivity	Human
Format	Purified
Clonality	Recombinant Rabbit Monoclonal
Isotype	Rabbit IgG
Clone Name	27C04
Purity	Affinity chromatography
UniProt	Q9UQM7, Q13554, Q13555, Q13557
Applications	Western Blot : 1:1000 Immunohistochemistry (FFPE) : 1:50
Limitations	This CAMK2 antibody is available for research use only.



IHC staining of FFPE human glioma tissue with CAMK2 antibody, HRP-secondary and DAB substrate. HIER: boil tissue sections in pH8 EDTA for 20 min and allow to cool before testing.



IHC staining of FFPE human colon cancer tissue with CAMK2 antibody, HRP-secondary and DAB substrate. HIER: boil tissue sections in pH8 EDTA for 20 min and allow to cool before testing.



Western blot testing of human 1) HeLa, 2) HepG2 and 3) A549 cell lysate with CAMK2 antibody. Predicted molecular weight ~54 kDa.

## Description

Calcium/calmodulin-dependent protein kinase II (CAMK2) is a multifunctional serine/threonine kinase that plays a central role in calcium signaling pathways. It is composed of several isoforms-CAMK2A, CAMK2B, CAMK2D, and CAMK2G-each with distinct expression patterns and regulatory roles in neuronal, cardiac, and other cell types.

CAMK2 regulates diverse cellular processes including synaptic plasticity, learning and memory, cardiac muscle contraction, and cell cycle progression. Dysregulation of CAMK2 activity or expression has been linked to neurological disorders, heart disease, and cancer, making it an important subject of biomedical research.

Using a high-quality CAMK2 antibody enables accurate detection of the protein in applications such as western blot, immunohistochemistry, and immunofluorescence. A CAMK2 antibody from NSJ Bioreagents ensures reproducibility and sensitivity for studies involving calcium signaling, kinase regulation, and disease mechanisms. Selecting the right CAMK2 antibody is essential for obtaining consistent and meaningful experimental results.

## Application Notes

Optimal dilution of the CAMK2 antibody should be determined by the researcher.

## Immunogen

A peptide sequence specific to CAMK II protein was used as the immunogen for the CAMK2 antibody.

## Storage

After reconstitution, the CAMK2 antibody can be stored for up to one month at 4°C. For long-term, aliquot and store at -20°C. Avoid repeated freezing and thawing.