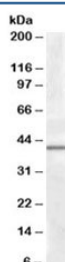


## CAMK1D Antibody (R33177)

Catalog No.	Formulation	Size
R33177-100UG	0.5 mg/ml in 1X TBS, pH7.3, with 0.5% BSA (US sourced) and 0.02% sodium azide	100 ug

[Bulk quote request](#)

Availability	1-3 business days
Species Reactivity	Human
Format	Antigen affinity purified
Host	Goat
Clonality	Polyclonal (goat origin)
Isotype	Goat Ig
Purity	Antigen affinity
Gene ID	57118
Applications	Western Blot : 1-3ug/ml ELISA (peptide) LOD : 1:4000
Limitations	This CAMK1D antibody is available for research use only.



Western blot testing of human liver lysate with CAMK1D antibody at 0.5ug/ml. Predicted molecular weight: ~40kDa.

## Description

Additional name(s) for this target protein: Calcium/calmodulin-dependent protein kinase 1 delta

## Application Notes

Optimal dilution of the CAMK1D antibody should be determined by the researcher.

## Immunogen

Amino acids ASQKDCAYVAKPES were used as the immunogen for this CAMK1D antibody.

## **Storage**

Aliquot and store the CAMK1D antibody at -20oC.