

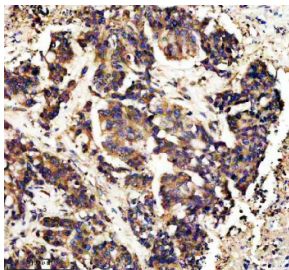
CAMK II alpha Antibody / CAMK2A [clone AAFF-3] (RQ8916)

| Catalog No. | Formulation | Size |
|-------------|--|--------|
| RQ8916 | Antibody in PBS with 0.02% sodium azide, 50% glycerol and 0.4-0.5mg/ml BSA | 100 ul |

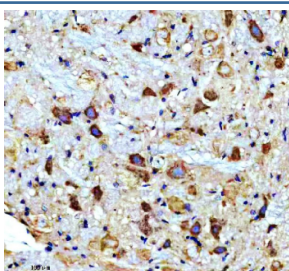
Recombinant **RABBIT MONOCLONAL**

[Bulk quote request](#)

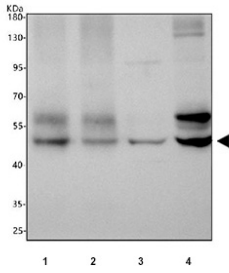
| | |
|---------------------------|---|
| Availability | 1-3 days |
| Species Reactivity | Human, Mouse, Rat |
| Format | Purified |
| Host | Rabbit |
| Clonality | Recombinant Rabbit Monoclonal |
| Isotype | Rabbit IgG |
| Clone Name | AAFF-3 |
| Purity | Affinity chromatography |
| UniProt | Q9UQM7 |
| Applications | Western Blot : 1:1000 Immunohistochemistry (FFPE) : 1:50 |
| Limitations | This CAMK II alpha antibody is available for research use only. |



IHC staining of FFPE human colon cancer tissue with CAMK II alpha antibody, HRP-secondary and DAB substrate. HIER: boil tissue sections in pH8 EDTA for 20 min and allow to cool before testing.



IHC staining of FFPE rat brain tissue with CAMK II alpha antibody, HRP-secondary and DAB substrate. HIER: boil tissue sections in pH8 EDTA for 20 min and allow to cool before testing.



Western blot testing of 1) rat hippocampus, 2) rat brain, 3) rat C6 and 4) mouse brain tissue lysate with CAMK II alpha antibody. Predicted molecular weight ~54 kDa. An additional ~65 kDa band is often observed.

Description

CAMK II alpha (CAMK2A) is a member of the calcium/calmodulin-dependent protein kinase II family, which plays a central role in calcium signaling. CAMK II alpha is highly expressed in the brain and is critical for regulating synaptic plasticity, memory formation, and long-term potentiation. A CAMK II alpha antibody is widely used to investigate these neuronal processes.

The kinase functions by phosphorylating a variety of substrates involved in neurotransmission, cytoskeletal organization, and gene expression. Dysregulation of CAMK II alpha has been linked to neurological disorders, learning deficits, and psychiatric conditions. Employing a CAMK II alpha antibody enables detailed study of its function in both normal physiology and disease.

NSJ Bioreagents offers a high-quality CAMK II alpha antibody validated for applications such as western blot, immunohistochemistry, and immunofluorescence. Using a CAMK II alpha antibody ensures sensitive detection and reproducibility in studies of calcium signaling, synaptic activity, and brain research.

Application Notes

Optimal dilution of the CAMK II alpha antibody should be determined by the researcher.

Immunogen

A peptide sequence specific to CAMK II alpha protein was used as the immunogen for the CAMK II alpha antibody.

Storage

After reconstitution, the CAMK II alpha antibody can be stored for up to one month at 4°C. For long-term, aliquot and store at -20°C. Avoid repeated freezing and thawing.