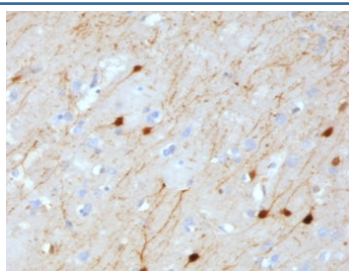


## Calretinin Antibody / CALB2 / Calbindin 2 [clone CLRT-1] (V7374)

Catalog No.	Formulation	Size
V7374-100UG	0.2 mg/ml in 1X PBS with 0.1 mg/ml BSA (US sourced) and 0.05% sodium azide	100 ug
V7374-20UG	0.2 mg/ml in 1X PBS with 0.1 mg/ml BSA (US sourced) and 0.05% sodium azide	20 ug
V7374SAF-100UG	1 mg/ml in 1X PBS; BSA free, sodium azide free	100 ug
V7374IHC-7ML	Prediluted in 1X PBS with 0.1 mg/ml BSA (US sourced) and 0.05% sodium azide; *For IHC use only*	7 ml

[Bulk quote request](#)

<b>Availability</b>	1-3 business days
<b>Species Reactivity</b>	Human
<b>Format</b>	Purified
<b>Host</b>	Mouse
<b>Clonality</b>	Monoclonal (mouse origin)
<b>Isotype</b>	Mouse IgG1, kappa
<b>Clone Name</b>	CLRT-1
<b>Purity</b>	Protein G affinity
<b>UniProt</b>	P22676
<b>Localization</b>	Nuclear, cytoplasmic
<b>Applications</b>	Immunohistochemistry (FFPE) : 1-2ug/ml for 30 min at RT Prediluted IHC Only Format : incubate for 30 min at RT (1)
<b>Limitations</b>	This Calretinin antibody is available for research use only.



IHC testing of FFPE human cerebellum with Calretinin antibody (clone CLRT-1). HIER: boil tissue sections in pH6, 10mM citrate buffer, for 10-20 min followed by cooling at RT for 20 min.

## Description

This gene encodes an intracellular calcium-binding protein belonging to the troponin C superfamily. Members of this protein family have six EF-hand domains which bind calcium. Calretinin/Calbindin 2 plays a role in diverse cellular functions, including message targeting and intracellular calcium buffering. It also functions as a modulator of neuronal excitability, and is a diagnostic marker for some human diseases, including Hirschsprung disease and some cancers. Alternative splicing results in multiple transcript variants. [RefSeq]

## Application Notes

Optimal dilution of the Calretinin antibody should be determined by the researcher.

1. The prediluted format is supplied in a dropper bottle and is optimized for use in IHC. After epitope retrieval step (if required), drip mAb solution onto the tissue section and incubate at RT for 30 min.

## Immunogen

A portion of amino acids 23-242 from the human protein was used as the immunogen for the Calretinin antibody.

## Storage

Store the Calretinin antibody at 2-8°C (with azide) or aliquot and store at -20°C or colder (without azide).