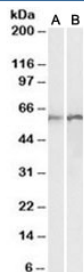


Calreticulin Antibody (R34247)

Catalog No.	Formulation	Size
R34247-100UG	0.5 mg/ml in 1X TBS, pH7.3, with 0.5% BSA (US sourced) and 0.02% sodium azide	100 ug

[Bulk quote request](#)

Availability	1-3 business days
Species Reactivity	Human
Predicted Reactivity	Cow, Dog, Mouse, Pig, Rat
Format	Antigen affinity purified
Host	Goat
Clonality	Polyclonal (goat origin)
Isotype	Goat Ig
Purity	Antigen affinity
Gene ID	811
Applications	Western Blot : 0.01-0.1ug/ml ELISA (peptide) LOD : 1:128000
Limitations	This Calreticulin antibody is available for research use only.



Western blot testing of human [A] and rat [B] lung lysates with Calreticulin antibody at 0.01ug/ml. Predicted molecular weight ~48kDa but routinely observed at 55~60kDa.

Description

Additional name(s) for this target protein: Sicca syndrome antigen A, Autoantigen Ro; CALR

Application Notes

Optimal dilution of the Calreticulin antibody should be determined by the researcher.

Immunogen

Amino acids HPEIDNPEYSPDPS were used as the immunogen for this Calreticulin antibody.

Storage

Aliquot and store the Calreticulin antibody at -20oC.