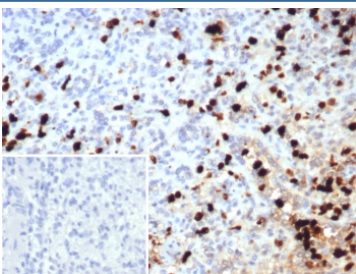


Calprotectin Antibody / MRP14 / S100A9 [clone S100A9/7552] (V4714)

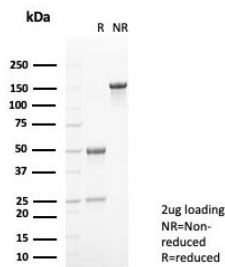
Catalog No.	Formulation	Size
V4714-100UG	0.2 mg/ml in 1X PBS with 0.1 mg/ml BSA (US sourced), 0.05% sodium azide	100 ug
V4714-20UG	0.2 mg/ml in 1X PBS with 0.1 mg/ml BSA (US sourced), 0.05% sodium azide	20 ug
V4714SAF-100UG	1 mg/ml in 1X PBS; BSA free, sodium azide free	100 ug

[Bulk quote request](#)

Availability	1-3 business days
Species Reactivity	Human
Format	Purified
Host	Mouse
Clonality	Monoclonal (mouse origin)
Isotype	Mouse IgG1, kappa
Clone Name	S100A9/7552
Purity	Protein A/G affinity
UniProt	P06702
Localization	Cytoplasm, Extracellular (secreted), Cell Surface
Applications	Immunohistochemistry (FFPE) : 1-2ug/ml for 30 min at RT
Limitations	This Calprotectin antibody is available for research use only.



IHC staining of FFPE human spleen tissue with Calprotectin antibody (clone S100A9/7552). Inset: PBS used in place of primary Ab (secondary Ab negative control).
HIER: boil tissue sections in pH 9 10mM Tris with 1mM EDTA for 20 min and allow to cool before testing.



SDS-PAGE analysis of purified, BSA-free Calprotectin antibody (clone S100A9/7552) as confirmation of integrity and purity.

Description

Calprotectin also promotes phagocyte migration and infiltration of granulocytes at sites of wounding. It plays a role as a pro-inflammatory mediator in acute and chronic inflammation and up-regulates the release of IL8 and cell-surface expression of ICAM1.

Application Notes

Optimal dilution of the Calprotectin antibody should be determined by the researcher.

Immunogen

A recombinant partial protein sequence (within amino acids 1-100) from the human protein was used as the immunogen for the Calprotectin antibody.

Storage

Aliquot the Calprotectin antibody and store frozen at -20oC or colder. Avoid repeated freeze-thaw cycles.