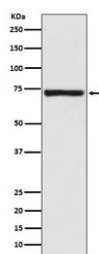


Calpain 1 Antibody / CAPN1 [clone ABFI-3] (RQ5178)

Catalog No.	Formulation	Size
RQ5178	Antibody in PBS with 0.02% sodium azide, 50% glycerol and 0.4-0.5mg/ml BSA	100 ul

[Bulk quote request](#)

Availability	1-2 weeks
Species Reactivity	Human, Mouse, Rat
Format	Purified
Clonality	Rabbit Monoclonal
Isotype	Rabbit IgG
Clone Name	ABFI-3
Purity	Affinity purified
UniProt	P07384
Applications	Western Blot : 1:500-1:2000 Immunohistochemistry (FFPE) : 1:50-1:200 Immunofluorescence/Immunocytochemistry : 1:50-1:200 Flow Cytometry : 1:100
Limitations	This Calpain 1 antibody is available for research use only.



Western blot testing of human fetal kidney lysate with Calpain 1 antibody. Predicted molecular weight ~82 kDa.

Description

The calpains, calcium-activated neutral proteases, are nonlysosomal, intracellular cysteine proteases. The mammalian calpains include ubiquitous, stomach-specific, and muscle-specific proteins. The ubiquitous enzymes consist of heterodimers with distinct large, catalytic subunits associated with a common small, regulatory subunit. This gene encodes the large subunit of the ubiquitous enzyme, calpain 1. [RefSeq]

Application Notes

Optimal dilution of the Calpain 1 antibody should be determined by the researcher.

Immunogen

A synthetic peptide specific to human Calpain 1 / CAPN1 was used as the immunogen for the Calpain 1 antibody.

Storage

Store the Calpain 1 antibody at -20oC.