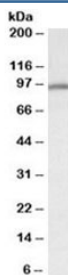


Calnexin Antibody (R35947)

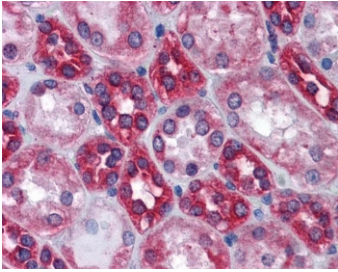
Catalog No.	Formulation	Size
R35947-100UG	0.5 mg/ml in 1X TBS, pH7.3, with 0.5% BSA (US sourced) and 0.02% sodium azide	100 ug

[Bulk quote request](#)

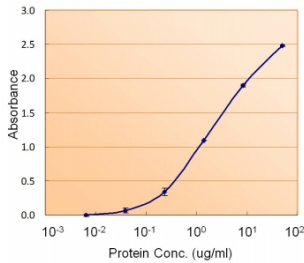
Availability	1-3 business days
Species Reactivity	Human, Mouse
Predicted Reactivity	Rat, Dog, Pig, Cow
Format	Antigen affinity purified
Host	Goat
Clonality	Polyclonal (goat origin)
Isotype	Goat Ig
Purity	Antigen affinity
Gene ID	821
Localization	Cytoplasmic
Applications	Western Blot : 0.3-1ug/ml Immunohistochemistry (FFPE) : 3-6ug/ml Enzyme ImmunoAssay : binds recombinant protein (use at 1-2ug/ml) ELISA (peptide) LOD : 1:32000
Limitations	This Calnexin antibody is available for research use only.



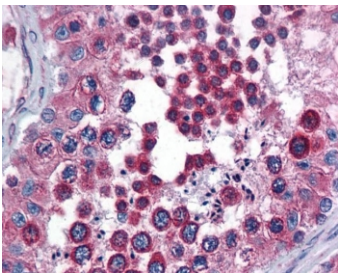
Western blot testing of mouse heart lysate with Calnexin antibody at 0.3ug/ml. Molecular weight: routinely observed at ~90 kDa.



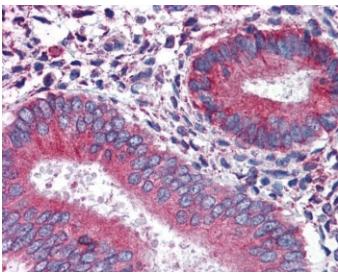
IHC staining of FFPE human kidney with Calnexin antibody at 3.8ug/ml. HIER: steamed with pH6 citrate buffer, AP-staining.



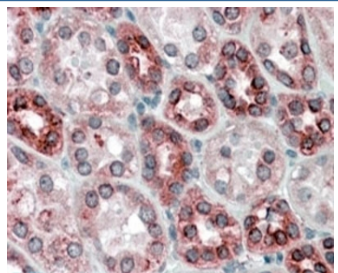
Sandwich ELISA using the Calnexin antibody at 1.5ug/ml as the detect.



IHC staining of FFPE human testis with Calnexin antibody at 3.8ug/ml. HIER: steamed with pH6 citrate buffer, AP-staining.



IHC staining of FFPE human uterus with Calnexin antibody at 3.8ug/ml. HIER: steamed with pH6 citrate buffer, AP-staining.



IHC staining of FFPE human kidney with Calnexin antibody at 4ug/ml. HIER: steamed with pH6 citrate buffer, AP-staining.

Description

Additional name(s) for this target protein: CANX, CNX

Application Notes

Optimal dilution of the Calnexin antibody should be determined by the researcher.

Immunogen

Amino acids SKTPELNLDQFHDKT were used as the immunogen for this Calnexin antibody.

Storage

Aliquot and store the Calnexin antibody at -20oC.