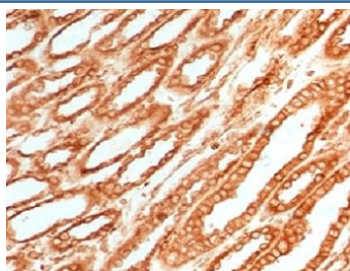


## Calnexin Antibody [clone CLNXN-1] (V3796)

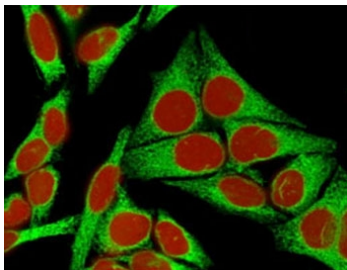
Catalog No.	Formulation	Size
V3796-100UG	0.2 mg/ml in 1X PBS with 0.1 mg/ml BSA (US sourced) and 0.05% sodium azide	100 ug
V3796-20UG	0.2 mg/ml in 1X PBS with 0.1 mg/ml BSA (US sourced) and 0.05% sodium azide	20 ug
V3796SAF-100UG	1 mg/ml in 1X PBS; BSA free, sodium azide free	100 ug

[Bulk quote request](#)

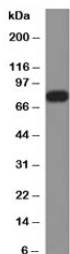
<b>Availability</b>	1-3 business days
<b>Species Reactivity</b>	Human
<b>Format</b>	Purified
<b>Host</b>	Mouse
<b>Clonality</b>	Monoclonal (mouse origin)
<b>Isotype</b>	Mouse IgG2b, kappa
<b>Clone Name</b>	CLNXN-1
<b>Purity</b>	Protein G affinity chromatography
<b>UniProt</b>	P27824
<b>Localization</b>	Cytoplasmic
<b>Applications</b>	Western Blot : 1-2ug/ml Immunofluorescence : 1-2ug/ml Immunohistochemistry (FFPE) : 1-2ug/ml for 30 min at RT
<b>Limitations</b>	This Calnexin antibody is available for research use only.



IHC testing of FFPE human renal cell carcinoma with Calnexin antibody (clone CLNXN-1). HIER: boil tissue sections in pH 9 10mM Tris with 1mM EDTA for 10-20 min followed by cooling at RT for 20 min.



Immunofluorescent staining of human HeLa cells with Calnexin antibody (green, clone CLNXN-1). RedDot used as nuclear counterstain (red).



Western blot testing of human HeLa cell lysate with Calnexin antibody (clone CLNXN-1). Predicted molecular weight ~68 kDa but routinely observed at ~90 kDa.

## Description

Calcium-binding protein that interacts with newly synthesized glycoproteins in the endoplasmic reticulum. It may act in assisting protein assembly and/or in the retention within the ER of unassembled protein subunits. It seems to play a major role in the quality control apparatus of the ER by the retention of incorrectly folded proteins. Associated with partial T-cell antigen receptor complexes that escape the ER of immature thymocytes, it may function as a signaling complex regulating thymocyte maturation. Additionally it may play a role in receptor-mediated endocytosis at the synapse. [UniProt]

## Application Notes

The stated application concentrations are suggested starting points. Titration of the Calnexin antibody may be required due to differences in protocols and secondary/substrate sensitivity.

## Immunogen

A partial human recombinant protein was used as the immunogen for the Calnexin antibody.

## Storage

Store the Calnexin antibody at 2-8oC (with azide) or aliquot and store at -20oC or colder (without azide).