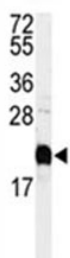


Calmodulin Antibody (F40038)

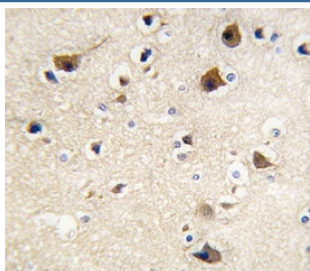
Catalog No.	Formulation	Size
F40038-0.4ML	In 1X PBS, pH 7.4, with 0.09% sodium azide	0.4 ml
F40038-0.08ML	In 1X PBS, pH 7.4, with 0.09% sodium azide	0.08 ml

[Bulk quote request](#)

Availability	1-3 business days
Species Reactivity	Human
Predicted Reactivity	Bovine, Chicken, Mouse, Rabbit, Rat, Xenopus, Zebrafish
Format	Purified
Clonality	Polyclonal (rabbit origin)
Isotype	Rabbit Ig
Purity	Purified
UniProt	P62158
Applications	Western Blot : 1:1000 IHC (Paraffin) : 1:10-1:50
Limitations	This Calmodulin antibody is available for research use only.



Western blot analysis of Calmodulin antibody and HeLa lysate.



IHC analysis of FFPE human brain tissue stained with Calmodulin antibody

Description

Calmodulin is the archetype of the family of calcium-modulated proteins of which nearly 20 members have been found. They are identified by their occurrence in the cytosol or on membranes facing the cytosol and by a high affinity for calcium. Calmodulin contains 149 amino acids and has 4 calcium-binding domains. Its functions include roles in growth and the cell cycle as well as in signal transduction and the synthesis and release of neurotransmitters.

Application Notes

Titration of the Calmodulin antibody may be required due to differences in protocols and secondary/substrate sensitivity.

Immunogen

A portion of amino acids 117-149 from the human protein was used as the immunogen for this Calmodulin antibody.

Storage

Aliquot the Calmodulin antibody and store frozen at -20oC or colder. Avoid repeated freeze-thaw cycles.