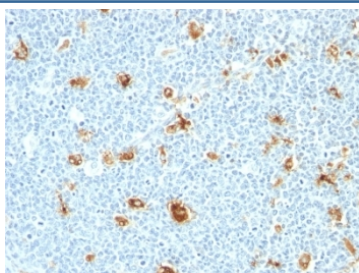


## Calgranulin A + B Antibody [clone CAGB/426] (V2848)

Catalog No.	Formulation	Size
V2848-100UG	0.2 mg/ml in 1X PBS with 0.1 mg/ml BSA (US sourced) and 0.05% sodium azide	100 ug
V2848-20UG	0.2 mg/ml in 1X PBS with 0.1 mg/ml BSA (US sourced) and 0.05% sodium azide	20 ug
V2848SAF-100UG	1 mg/ml in 1X PBS; BSA free, sodium azide free	100 ug

[Bulk quote request](#)

<b>Availability</b>	1-3 business days
<b>Species Reactivity</b>	Human
<b>Format</b>	Purified
<b>Host</b>	Mouse
<b>Clonality</b>	Monoclonal (mouse origin)
<b>Isotype</b>	Mouse IgM, kappa
<b>Clone Name</b>	CAGB/426
<b>Purity</b>	PEG precipitation
<b>UniProt</b>	P06702
<b>Localization</b>	Cytoplasmic
<b>Applications</b>	Immunohistochemistry (FFPE) : 0.5-1ug/ml for 30 min at RT
<b>Limitations</b>	This Calgranulin A + B antibody is available for research use only.



IHC: Formalin-fixed, paraffin-embedded human tonsil stained with Calgranulin A + B antibody (CAGB/426)

## Description

Recognizes a 12-14kDa doublet of Calgranulin A/B (also known as S100A8/A9 or MRP-8/14); expressed by granulocytes, monocytes and by tissue macrophages. The protein encoded by this gene is a member of the S100 family of proteins containing 2 EF-hand calcium-binding motifs. S100 proteins are localized in the cytoplasm and/or nucleus of a wide range of cells, and involved in the regulation of a number of cellular processes such as cell cycle progression and differentiation. Altered expression of this protein is associated with the disease cystic fibrosis. This mAb reacts with neutrophils, monocytes, macrophages, and squamous mucosal epithelia and has been shown as an important marker for identifying macrophages in tissue sections.

## Application Notes

Optimal dilution of the Calgranulin A + B antibody should be determined by the researcher.

1. Staining of formalin-fixed tissues requires boiling tissue sections in 10mM Citrate buffer, pH 6.0, for 10-20 min followed by cooling at RT for 20 min.

## Immunogen

Recombinant human protein was used as the immunogen for the Calgranulin A + B antibody.

## Storage

Store the Calgranulin A + B antibody at 2-8oC (with azide) or aliquot and store at -20oC or colder (without azide).