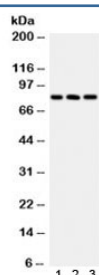


## Calcineurin A Antibody / PPP3CA (R32200)

Catalog No.	Formulation	Size
R32200	0.5mg/ml if reconstituted with 0.2ml sterile DI water	100 ug

**Bulk quote request**

<b>Availability</b>	1-3 business days
<b>Species Reactivity</b>	Human
<b>Format</b>	Antigen affinity purified
<b>Host</b>	Rabbit
<b>Clonality</b>	Polyclonal (rabbit origin)
<b>Isotype</b>	Rabbit IgG
<b>Purity</b>	Antigen affinity
<b>Buffer</b>	Lyophilized from 1X PBS with 2.5% BSA and 0.025% sodium azide
<b>UniProt</b>	Q08209
<b>Applications</b>	Western Blot : 0.1-0.5ug/ml
<b>Limitations</b>	This Calcineurin A antibody is available for research use only.



Western blot testing of human 1) HeLa, 2) A549 and 3) COLO320 lysate with Calcineurin A antibody. Predicted molecular weight ~61 kDa, observed here at ~84 kDa.

## Description

Calcineurin A is also known as PPP3CA. It is mapped to 4q24. Semsarian et al. (1999) and Musaro et al. (1999) independently showed that IGF1 stimulates skeletal muscle hypertrophy and a switch to glycolytic metabolism by activating calcineurin A and inducing the nuclear translocation of transcription factor NFATC1. Semsarian et al. (1999) found that hypertrophy was suppressed by the calcineurin inhibitors cyclosporin A or FK506, but not by inhibitors of the MAP kinase or phosphatidylinositol-3-OH kinase pathways. Musaro et al. (1999) showed that expression of a dominant-negative calcineurin mutant also repressed myocyte differentiation and hypertrophy. Musaro et al. (1999) demonstrated that either IGF1 or activated calcineurin induces expression of transcription factor GATA2, which accumulates in a subset

of myocyte nuclei, where it associates with calcineurin and a specific dephosphorylated isoform of NFATC1.

## Application Notes

Optimal dilution of the Calcineurin A antibody should be determined by the researcher.

## Immunogen

Amino acids DAMPSDANLNSINKALTSETNGTDSNGSNSSNIQ of human Calcineurin A were used as the immunogen for the Calcineurin A antibody.

## Storage

After reconstitution, the Calcineurin A antibody can be stored for up to one month at 4oC. For long-term, aliquot and store at -20oC. Avoid repeated freezing and thawing.