

## Calbindin 1 Antibody / CALB1 (R34664)

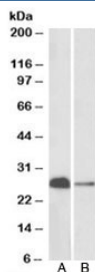
Catalog No.	Formulation	Size
R34664-100UG	0.5 mg/ml in 1X TBS, pH7.3, with 0.5% BSA (US sourced) and 0.02% sodium azide	100 ug

[Bulk quote request](#)

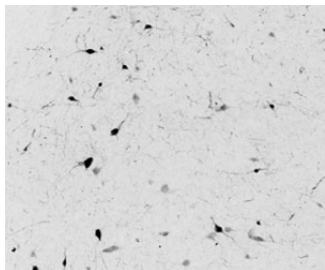
<b>Availability</b>	1-3 business days
<b>Species Reactivity</b>	Human, Mouse, Rat
<b>Predicted Reactivity</b>	Cow, Dog, Pig
<b>Format</b>	Antigen affinity purified
<b>Host</b>	Goat
<b>Clonality</b>	Polyclonal (goat origin)
<b>Isotype</b>	Goat Ig
<b>Purity</b>	Antigen affinity
<b>Gene ID</b>	793
<b>Applications</b>	Western Blot : 0.03-0.1ug/ml IHC (Frozen) : 0.1-0.3ug/ml IHC (FFPE) : 5-10ug/ml ELISA (peptide) LOD : 1:128000
<b>Limitations</b>	This Calbindin 1 antibody is available for research use only.



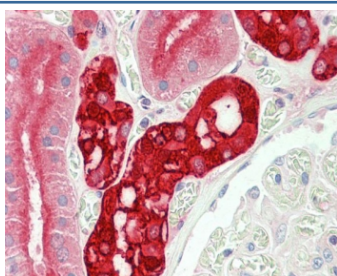
Western blot testing of human cerebellum lysate with Calbindin 1 antibody at 0.03ug/ml.  
Predicted molecular weight: ~30 kDa, routinely observed at 27-28 kDa.



Western blot of mouse (A) and rat (B) brain lysates with Calbindin 1 antibody at 0.1ug/ml. Predicted molecular weight: ~30 kDa, routinely observed at 27-28 kDa.



IHC testing of frozen human hypothalamus with Calbindin 1 antibody at 0.1ug/ml. A biotin secondary followed by SAv-HRP and DAB were used for the staining.



IHC staining of FFPE human kidney with Calbindin 1 antibody at 5ug/ml. HIER: boil tissue sections in pH6, 10mM citrate buffer, for 10-20 min and allow to cool before testing.

## Description

Additional name(s) for this target protein: Calbindin D28, vitamin D-dependent calcium-binding protein; CALB1; D-28K

## Application Notes

Optimal dilution of the Calbindin 1 antibody should be determined by the researcher.

## Immunogen

Amino acids KTFVDQYGQRDDGK were used as the immunogen for this Calbindin 1 antibody.

## Storage

Aliquot and store the Calbindin 1 antibody at -20oC.