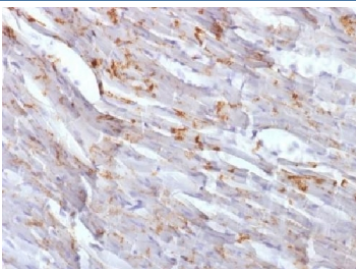


## Cadherin 2 Antibody / CDH2 / N-Cadherin / CD325 [clone CDH2/1573] (V3318)

Catalog No.	Formulation	Size
V3318-100UG	0.2 mg/ml in 1X PBS with 0.1 mg/ml BSA (US sourced) and 0.05% sodium azide	100 ug
V3318-20UG	0.2 mg/ml in 1X PBS with 0.1 mg/ml BSA (US sourced) and 0.05% sodium azide	20 ug
V3318SAF-100UG	1 mg/ml in 1X PBS; BSA free, sodium azide free	100 ug

### Bulk quote request

<b>Species Reactivity</b>	Human, Mouse
<b>Format</b>	Purified
<b>Host</b>	Mouse
<b>Clonality</b>	Monoclonal (mouse origin)
<b>Isotype</b>	Mouse IgG1, kappa
<b>Clone Name</b>	CDH2/1573
<b>Purity</b>	Protein G affinity chromatography
<b>Buffer</b>	1X PBS, pH 7.4
<b>UniProt</b>	P19022
<b>Localization</b>	Cell surface, cytoplasmic
<b>Applications</b>	Immunohistochemistry (FFPE) : 0.5-1ug/ml
<b>Limitations</b>	This Cadherin 2 antibody is available for research use only.



IHC testing of FFPE mouse heart with Cadherin 2 antibody (clone CDH2/1573).  
Required HIER: boil tissue sections in 10mM Tris with 1mM EDTA, pH 9, for 10-20 min.

## Description

Recognizes a protein of ~140kDa, identified as N-Cadherin (NCAD), also known as Cadherin 2, CDH2 and CD325. Cadherin 2 is a 140 kDa protein belonging to a family of transmembrane molecules that mediate calcium-dependent intercellular adhesion. Cadherins are involved in controlling morphogenetic movements during development and regulate cell surface adhesion through homotypic adhesion with the same cadherin species. Expression of Cadherin 2 has been reported on a variety of normal tissues including neuronal, endothelial and muscle cells, and a subpopulation of early hematopoietic progenitor cells. Results aid in the classification of malignant non-carcinomatous neoplasms including mesotheliomas, chordomas, synovial sarcomas, malignant melanomas, epithelioid sarcomas, epithelioid angiosarcomas, clear cell sarcomas as well as serous and endometrioid tumors of the ovary have been demonstrated to be Cadherin 2 positive, whereas mucinous tumors are negative. Other Cadherin 2-positive neoplasms include renal cell carcinomas and some variant breast tumors, including medullary breast carcinomas and sarcomatoid metaplastic breast carcinomas.

## Application Notes

The concentration stated for each application is a general starting point. Variations in protocols, secondaries and substrates may require the Cadherin 2 antibody to be titered up or down for optimal performance.

## Immunogen

A human partial recombinant protein corresponding to the intracellular portion of CDH2 was used as the immunogen for this Cadherin 2 antibody.

## Storage

Store the Cadherin 2 antibody at 2-8°C (with azide) or aliquot and store at -20°C or colder (without azide).