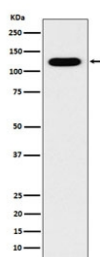


Cadherin 16 Antibody [clone AFFF-3] (RQ4773)

Catalog No.	Formulation	Size
RQ4773	Antibody in PBS with 0.02% sodium azide, 50% glycerol and 0.4-0.5mg/ml BSA	100 ul

[Bulk quote request](#)

Availability	1-2 weeks
Species Reactivity	Human
Format	Purified
Clonality	Rabbit Monoclonal
Isotype	Rabbit IgG
Clone Name	AFFF-3
Purity	Affinity purified
UniProt	O75309
Applications	Western Blot : 1:500-1:2000
Limitations	This Cadherin 16 antibody is available for research use only.



Western blot testing of human fetal kidney lysate with Cadherin 16 antibody. Expected molecular weight: 90-130 kDa.

Description

Cadherins are calcium dependent cell adhesion proteins. They preferentially interact with themselves in a homophilic manner in connecting cells; cadherins may thus contribute to the sorting of heterogeneous cell types.

Application Notes

Optimal dilution of the Cadherin 16 antibody should be determined by the researcher.

Immunogen

A synthetic peptide specific to human Cadherin 16 / CDH16 was used as the immunogen for the Cadherin 16 antibody.

Storage

Store the Cadherin 16 antibody at -20oC.