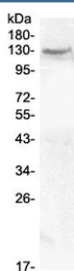


## CACNA2D2 Antibody (RQ4540)

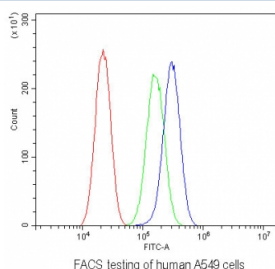
Catalog No.	Formulation	Size
RQ4540	0.5mg/ml if reconstituted with 0.2ml sterile DI water	100 ug

**Bulk quote request**

<b>Availability</b>	1-3 business days
<b>Species Reactivity</b>	Human
<b>Format</b>	Antigen affinity purified
<b>Clonality</b>	Polyclonal (rabbit origin)
<b>Isotype</b>	Rabbit IgG
<b>Purity</b>	Antigen affinity purified
<b>Buffer</b>	Lyophilized from 1X PBS with 2% Trehalose and 0.025% sodium azide
<b>UniProt</b>	Q9NY47
<b>Applications</b>	Western Blot : 0.5-1ug/ml Flow Cytometry : 1-3ug/10 <sup>6</sup> cells Direct ELISA : 0.1-0.5ug/ml (human recombinant protein)
<b>Limitations</b>	This CACNA2D2 antibody is available for research use only.



Western blot testing of human MCF7 cell lysate with CACNA2D2 antibody at 0.5ug/ml. Predicted molecular weight ~130 kDa.



Flow cytometry testing of human A549 cells with CACNA2D2 antibody at 1ug/10<sup>6</sup> cells (blocked with goat sera); Red=cells alone, Green=isotype control, Blue= CACNA2D2 antibody.

## Description

Voltage-dependent calcium channel subunit alpha2delta-2 is a protein that in humans is encoded by the CACNA2D2 gene. This gene is mapped to 3p21.31. It encodes a member of the alpha-2/delta subunit family, a protein in the voltage-dependent calcium channel complex. Calcium channels mediate the influx of calcium ions into the cell upon membrane polarization and consist of a complex of alpha-1, alpha-2/delta, beta, and gamma subunits in a 1:1:1:1 ratio. Various versions of each of these subunits exist, either expressed from similar genes or the result of alternative splicing. Research on a highly similar protein in rabbit suggests the protein described in this record is cleaved into alpha-2 and delta subunits. Alternate transcriptional splice variants of this gene, encoding different isoforms, have been characterized.

## Application Notes

Optimal dilution of the CACNA2D2 antibody should be determined by the researcher.

## Immunogen

Amino acids Q66-Q284 from the human protein were used as the immunogen for the CACNA2D2 antibody.

## Storage

After reconstitution, the CACNA2D2 antibody can be stored for up to one month at 4oC. For long-term, aliquot and store at -20oC. Avoid repeated freezing and thawing.