

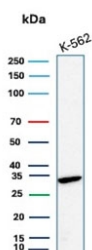
CA8 Antibody / Carbonic Anhydrase VIII [clone rCA8/8835] (V5245)

Catalog No.	Formulation	Size
V5245-100UG	0.2 mg/ml in 1X PBS with 0.1 mg/ml BSA (US sourced), 0.05% sodium azide	100 ug
V5245-20UG	0.2 mg/ml in 1X PBS with 0.1 mg/ml BSA (US sourced), 0.05% sodium azide	20 ug
V5245SAF-100UG	1 mg/ml in 1X PBS; BSA free, sodium azide free	100 ug

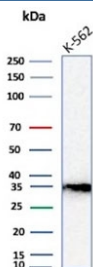
Recombinant **MOUSE MONOCLONAL**

[Bulk quote request](#)

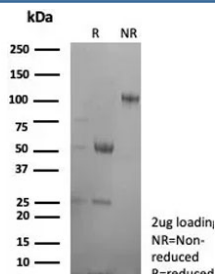
Availability	1-3 business days
Species Reactivity	Human
Format	Purified
Clonality	Recombinant Mouse Monoclonal
Isotype	Mouse IgG1, kappa
Clone Name	rCA8/8835
Purity	Protein A/G affinity
UniProt	P35219
Localization	Cytoplasm, Cell surface
Applications	Western Blot : 2-4ug/ml
Limitations	This CA8 antibody is available for research use only.



Western blot testing of human K562 cell lysate with CA8 antibody.



Western blot testing of human K562 cell lysate with CA8 antibody.



SDS-PAGE analysis of purified, BSA-free CA8 antibody (clone rCA8/8835) as confirmation of integrity and purity.

Description

The protein encoded by this gene was initially named CA-related protein because of sequence similarity to other known carbonic anhydrase genes. However, the gene product lacks carbonic anhydrase activity (i.e., the reversible hydration of carbon dioxide). The gene product continues to carry a carbonic anhydrase designation based on clear sequence identity to other members of the carbonic anhydrase gene family. The absence of CA8 gene transcription in the cerebellum of the lurcher mutant in mice with a neurologic defect suggests an important role for this acatalytic form. Mutations in CA8 gene causes neuropathology, such as ataxia, mild mental retardation and the predisposition to quadrupedal gait. It is also associated with the development of colorectal and lung cancers. Additionally, it is upregulated in various cancers.

Application Notes

Optimal dilution of the CA8 antibody should be determined by the researcher.

Immunogen

Recombinant full-length human protein was used as the immunogen for the CA8 antibody.

Storage

Aliquot the CA8 antibody and store frozen at -20°C or colder. Avoid repeated freeze-thaw cycles.