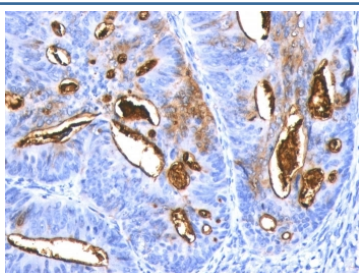


## CA19-9 Antibody [clone SPM588] (V3076)

Catalog No.	Formulation	Size
V3076-100UG	0.2 mg/ml in 1X PBS with 0.1 mg/ml BSA (US sourced) and 0.05% sodium azide	100 ug
V3076-20UG	0.2 mg/ml in 1X PBS with 0.1 mg/ml BSA (US sourced) and 0.05% sodium azide	20 ug
V3076SAF-100UG	1 mg/ml in 1X PBS; BSA free, sodium azide free	100 ug
V3076IHC-7ML	Prediluted in 1X PBS with 0.1 mg/ml BSA (US sourced) and 0.05% sodium azide; *For IHC use only*	7 ml

[Bulk quote request](#)

<b>Availability</b>	1-3 business days
<b>Species Reactivity</b>	Human
<b>Format</b>	Purified
<b>Host</b>	Mouse
<b>Clonality</b>	Monoclonal (mouse origin)
<b>Isotype</b>	Mouse IgM, kappa
<b>Clone Name</b>	SPM588
<b>Purity</b>	PEG precipitation
<b>UniProt</b>	Not Known
<b>Localization</b>	Cytoplasmic
<b>Applications</b>	Immunohistochemistry (FFPE) : 1-2ug/ml for 30 min at RT (1) Prediluted IHC Only Format : incubate for 30 min at RT (2)
<b>Limitations</b>	This CA19-9 antibody is available for research use only.



IHC: Formalin-fixed, paraffin-embedded human colon carcinoma stained with CA19-9 antibody (SPM588).

## Description

CA19-9, a carbohydrate epitope expressed on a high MW (>400kDa) mucin glycoprotein, is a sialyl Lewisa structure which is synthesized from type 1 blood group precursor chains and is present in individuals expressing the Lewisa and/or Lewisb blood group antigens. In normal tissues, sialyl Lewisa antigen is present in ductal epithelium of the breast, kidney, salivary gland, and sweat glands. Its expression is greatly enhanced in serum as well as in the majority of tumor cells in gastrointestinal (GI) carcinomas, including adenocarcinomas of the stomach, intestine, and pancreas. Preoperative elevated CA19-9 levels in patients with stage I pancreatic carcinoma decrease to normal values following surgery. When used serially, CA19-9 can predict recurrence of disease prior to radiographic or clinical findings. This mAb is superb for staining of formalin-fixed, paraffin-embedded tissues.

## Application Notes

Optimal dilution of the CA19-9 antibody should be determined by the researcher.

1. No special pretreatment is required for the immunohistochemical staining of formalin-fixed, paraffin-embedded tissues
2. The prediluted format is supplied in a dropper bottle and is optimized for use in IHC. After epitope retrieval step (if required), drip mAb solution onto the tissue section and incubate at RT for 30 min.

## Immunogen

Precipitin lines obtained after immuno-diffusion using mAb 116-NS-19-9 and mucins isolated from an ovarian cyst of a Lewis A+B- patient (0Le) were used as the immunogen for the CA19-9 antibody.

## Storage

Store the CA19-9 antibody at 2-8°C (with azide) or aliquot and store at -20°C or colder (without azide).