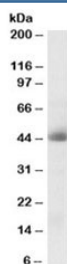


CA12 Antibody (R35918)

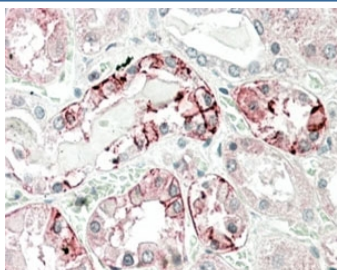
Catalog No.	Formulation	Size
R35918-100UG	0.5 mg/ml in 1X TBS, pH7.3, with 0.5% BSA (US sourced) and 0.02% sodium azide	100 ug

[Bulk quote request](#)

Availability	1-3 business days
Species Reactivity	Human
Format	Antigen affinity purified
Clonality	Polyclonal (goat origin)
Isotype	Goat Ig
Purity	Antigen affinity
Gene ID	771
Applications	Western Blot : 0.3-1ug/ml Immunohistochemistry (FFPE) : 5-10ug/ml ELISA (peptide) LOD : 1:128000
Limitations	This CA12 antibody is available for research use only.



Western blot testing of human kidney lysate with CA12 antibody at 0.3ug/ml. Predicted molecular weight: ~40kDa.



IHC staining of FFPE human kidney with CA12 antibody at 5ug/ml. HIER: steamed with pH6 citrate buffer, AP-staining.

Description

Additional name(s) for this target protein: Carbonic anhydrase XII, carbonic anhydrase 12

Application Notes

Optimal dilution of the CA12 antibody should be determined by the researcher.

Immunogen

Amino acids SHLQHVKYKGQE were used as the immunogen for this CA12 antibody.

Storage

Aliquot and store the CA12 antibody at -20oC.