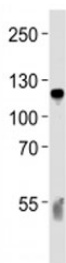


C6 Antibody / Complement C6 (F49975)

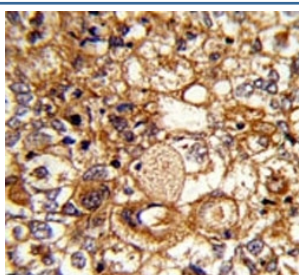
Catalog No.	Formulation	Size
F49975-0.4ML	In 1X PBS, pH 7.4, with 0.09% sodium azide	0.4 ml
F49975-0.08ML	In 1X PBS, pH 7.4, with 0.09% sodium azide	0.08 ml

[Bulk quote request](#)

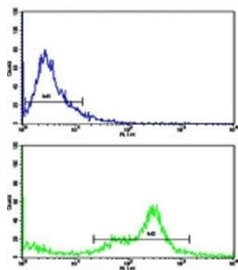
Availability	1-3 business days
Species Reactivity	Human
Format	Antigen affinity purified
Clonality	Polyclonal (rabbit origin)
Isotype	Rabbit Ig
Purity	Antigen affinity
UniProt	P13671
Applications	Western Blot : 1:1000 IHC (Paraffin) : 1:50-1:100 Flow Cytometry : 1:10-1:50 Immunofluorescence : 1:10-1:50
Limitations	This C6 antibody is available for research use only.



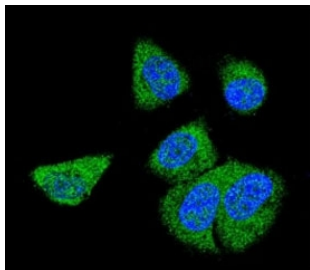
Western blot analysis of lysate from human blood plasma tissue lysate using C6 antibody diluted at 1:1000 for each lane.



IHC analysis of FFPE human breast carcinoma stained with C6 antibody



Flow cytometric analysis of MDA-231 cells using C6 antibody (green) compared to a [negative control](#) (blue).



Confocal immunofluorescent analysis of C6 antibody with MDA-MB231 cells followed by Alexa Fluor 488-conjugated goat anti-rabbit IgG (green). DAPI was used as a nuclear counterstain (blue).

Description

C6 is a component of complement cascade. It is part of the membrane attack complex which can insert into the cell membrane and cause cell to lyse. People with C6 deficiency are prone to bacterial infection.

Application Notes

Titration of the C6 antibody may be required due to differences in protocols and secondary/substrate sensitivity.

Immunogen

A portion of amino acids 30-58 from the human protein was used as the immunogen for this C6 antibody.

Storage

Aliquot the C6 antibody and store frozen at -20oC or colder. Avoid repeated freeze-thaw cycles.