

## C5 Antibody / Complement 5A (R31601)

Catalog No.	Formulation	Size
R31601	0.5mg/ml if reconstituted with 0.2ml sterile DI water	100 ug

**Bulk quote request**

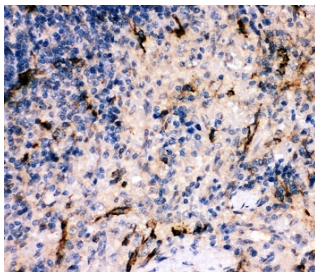
<b>Availability</b>	1-3 business days
<b>Species Reactivity</b>	Rat
<b>Format</b>	Antigen affinity purified
<b>Clonality</b>	Polyclonal (rabbit origin)
<b>Isotype</b>	Rabbit IgG
<b>Purity</b>	Antigen affinity
<b>Buffer</b>	Lyophilized from 1X PBS with 2.5% BSA and 0.025% sodium azide
<b>Gene ID</b>	362119
<b>Applications</b>	Western Blot : 0.5-1ug/ml IHC (FFPE) : 0.5-1ug/ml
<b>Limitations</b>	This C5 antibody is available for research use only.



Western blot testing of C5 antibody and rat liver lysate; Predicted molecular weight: ~115 kDa (C5 alpha chain).



Western blot testing of C5 antibody and recombinant rat protein (0.5ng)



IHC-P: C5 antibody testing of FFPE rat spleen tissue. HIER: boil tissue sections in pH6, 10mM citrate buffer, for 10-20 min and allow to cool before testing.

## Description

C5a is a protein fragment released from complement component C5. The protein plays an important role in inflammatory and cell killing processes. C5 is comprised of alpha and beta polypeptide chains that are linked by a disulfide bridge. An activation peptide, C5a, which is an anaphylatoxin that possesses potent spasmogenic and chemotactic activity, is derived from the alpha polypeptide via cleavage with a convertase. C5a plays a key role in increasing migration and adherence of neutrophils and monocytes to vessel walls. Mutations in this gene cause complement component 5 deficiency, a disease where patients show a propensity for severe recurrent infections. Defects in this gene have also been linked to susceptibility to liver fibrosis and to rheumatoid arthritis.

## Application Notes

Titration of the C5 antibody may be required due to differences in protocols and secondary/substrate sensitivity.

## Immunogen

Rat partial recombinant protein (AA 1-77) was used as the immunogen for this C5 antibody.

## Storage

The C5 antibody can be stored at 4oC to -20oC. After reconstitution, aliquot and store at -20oC. Avoid repeated freeze/thaws.