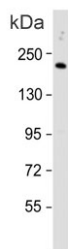


C4B Antibody / Complement C4B (F40031)

Catalog No.	Formulation	Size
F40031-0.4ML	In 1X PBS, pH 7.4, with 0.09% sodium azide	0.4 ml
F40031-0.08ML	In 1X PBS, pH 7.4, with 0.09% sodium azide	0.08 ml

[Bulk quote request](#)

Availability	1-3 business days
Species Reactivity	Human
Format	Antigen affinity purified
Host	Rabbit
Clonality	Polyclonal (rabbit origin)
Isotype	Rabbit Ig
Purity	Antigen affinity
UniProt	P0C0L4, P0C0L5
Applications	Western Blot : 1:1000
Limitations	This C4B antibody is available for research use only.



Western blot testing of human HepG2 cell lysate with C4B antibody. Predicted molecular weight ~193 kDa.

Description

This gene encodes the basic form of complement factor 4, part of the classical activation pathway. The protein is expressed as a single chain precursor which is proteolytically cleaved into a trimer of alpha, beta, and gamma chains prior to secretion. The trimer provides a surface for interaction between the antigen-antibody complex and other complement components. The alpha chain may be cleaved to release C4 anaphylatoxin, a mediator of local inflammation. Deficiency of this protein is associated with systemic lupus erythematosus. This gene localizes to the major histocompatibility complex (MHC) class III region on chromosome 6. Varying haplotypes of this gene cluster exist, such that individuals may have 1, 2, or 3 copies of this gene. In addition, this gene exists as a long form and a short form due

to the presence or absence of a 6.4 kb endogenous HERV-K retrovirus in intron 9.

Application Notes

Titration of the C4B antibody may be required due to differences in protocols and secondary/substrate sensitivity.

Immunogen

A portion of amino acids 655-684 from the human protein was used as the immunogen for this C4B antibody.

Storage

Aliquot the C4B antibody and store frozen at -20oC or colder. Avoid repeated freeze-thaw cycles.