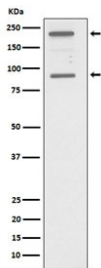


C4A Antibody / Complement C4A [clone AFHB-3] (RQ5301)

Catalog No.	Formulation	Size
RQ5301	Antibody in PBS with 0.02% sodium azide, 50% glycerol and 0.4-0.5mg/ml BSA	100 ul

[Bulk quote request](#)

Availability	1-2 weeks
Species Reactivity	Human
Format	Purified
Host	Rabbit
Clonality	Rabbit Monoclonal
Isotype	Rabbit IgG
Clone Name	AFHB-3
Purity	Affinity purified
UniProt	P0C0L4
Applications	Western Blot : 1:500-1:2000
Limitations	This C4A antibody is available for research use only.



Western blot testing of human HepG2 cell lysate with C4A antibody. Predicted molecular weight: 193-203 kDa (C4A) and 93-98 kDa (C4A alpha chain).

Description

This gene encodes the acidic form of complement factor 4, part of the classical activation pathway. The protein is expressed as a single chain precursor which is proteolytically cleaved into a trimer of alpha, beta, and gamma chains prior to secretion. The trimer provides a surface for interaction between the antigen-antibody complex and other complement components. The alpha chain is cleaved to release C4 anaphylatoxin, an antimicrobial peptide and a mediator of local inflammation. Deficiency of this protein is associated with systemic lupus erythematosus and type I diabetes mellitus. [RefSeq]

Application Notes

Optimal dilution of the C4A antibody should be determined by the researcher.

Immunogen

A synthetic peptide specific to human C4A / Complement C4A was used as the immunogen for the C4A antibody.

Storage

Store the C4A antibody at -20oC.