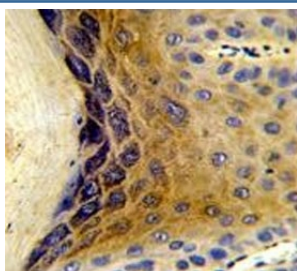


## C1QTNF1 Antibody (F54866)

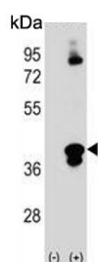
Catalog No.	Formulation	Size
F54866-0.4ML	In 1X PBS, pH 7.4, with 0.09% sodium azide	0.4 ml
F54866-0.08ML	In 1X PBS, pH 7.4, with 0.09% sodium azide	0.08 ml

[Bulk quote request](#)

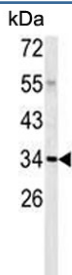
<b>Availability</b>	1-3 business days
<b>Species Reactivity</b>	Human
<b>Format</b>	Purified
<b>Clonality</b>	Polyclonal (rabbit origin)
<b>Isotype</b>	Rabbit Ig
<b>Purity</b>	Purified
<b>UniProt</b>	Q9BXJ1
<b>Applications</b>	Western Blot : 1:500-1:1000 Flow Cytometry : 1:10-1:50 (1x10e6 cells) Immunohistochemistry (FFPE) : 1:50-1:100
<b>Limitations</b>	This C1QTNF1 antibody is available for research use only.



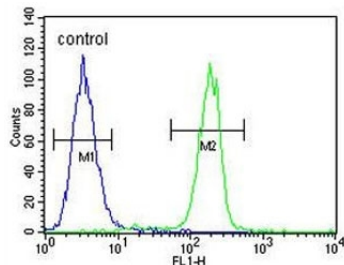
IHC testing of FFPE human skin tissue with C1QTNF1 antibody. HIER: steam section in pH6 citrate buffer for 20 min and allow to cool prior to staining.



Western blot testing of 1) non-transfected and 2) transfected 293 cell lysate with C1QTNF1 antibody.



Western blot testing of human A2058 cell lysate with C1QTNF1 antibody. Predicted molecular weight ~32 kDa.



Flow cytometry testing of human A375 cells with C1QTNF1 antibody; Blue=isotype control, Green= C1QTNF1 antibody.

## Description

Alternate name(s): Complement C1q tumor necrosis factor-related protein 1; G protein-coupled receptor-interacting protein; GIP

## Application Notes

The stated application concentrations are suggested starting points. Titration of the C1QTNF1 antibody may be required due to differences in protocols and secondary/substrate sensitivity.

## Immunogen

A portion of amino acids 32-61 from the human protein was used as the immunogen for the C1QTNF1 antibody.

## Storage

Aliquot the C1QTNF1 antibody and store frozen at -20oC or colder. Avoid repeated freeze-thaw cycles.