

C1QA Antibody / Complement C1q A-Chain [clone CCSA-1] (V8133)

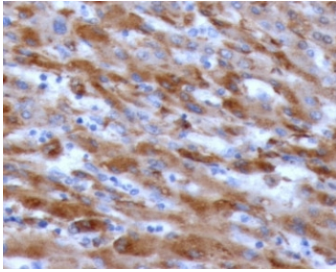
Catalog No.	Formulation	Size
V8133-100UG	0.2 mg/ml in 1X PBS with 0.1 mg/ml BSA (US sourced) and 0.05% sodium azide	100 ug
V8133-20UG	0.2 mg/ml in 1X PBS with 0.1 mg/ml BSA (US sourced) and 0.05% sodium azide	20 ug
V8133SAF-100UG	1 mg/ml in 1X PBS; BSA free, sodium azide free	100 ug

Bulk quote request

Availability	1-3 business days
Species Reactivity	Human
Format	Purified
Clonality	Monoclonal (mouse origin)
Isotype	Mouse IgG2b, kappa
Clone Name	CCSA-1
Purity	Protein G affinity chromatography
UniProt	P02745
Localization	Secreted
Applications	Western Blot : 1-2ug/ml Immunohistochemistry (FFPE) : 1-2ug/ml
Limitations	This C1QA antibody is available for research use only.



Western blot testing of human PC3 cell lysate with C1QA antibody (clone CCSA-1).
Predicted molecular weight ~26 kDa.



IHC staining of FFPE human liver with C1QA antibody (clone CCSA-1). HIER: boil tissue sections in pH 9 10mM Tris with 1mM EDTA for 10-20 min and allow to cool before testing.

Description

C1q associates with the proenzymes C1r and C1s to yield C1, the first component of the serum complement system. The collagen-like regions of C1q interact with the Ca^{2+} -dependent C1r2C1s2 proenzyme complex, and efficient activation of C1 takes place on interaction of the globular heads of C1q with the Fc regions of IgG or IgM antibody present in immune complexes. [UniProt]

Application Notes

The stated application concentrations are suggested starting points. Titration of the C1QA antibody may be required due to differences in protocols and secondary/substrate sensitivity.

Immunogen

Amino acids 104-237 were used as the immunogen for the C1QA antibody.

Storage

Store the C1QA antibody at 2-8°C (with azide) or aliquot and store at -20°C or colder (without azide).