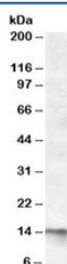


## C1D Antibody (R35942)

Catalog No.	Formulation	Size
R35942-100UG	0.5 mg/ml in 1X TBS, pH7.3, with 0.5% BSA (US sourced) and 0.02% sodium azide	100 ug

[Bulk quote request](#)

Availability	1-3 business days
Species Reactivity	Human
Format	Antigen affinity purified
Host	Goat
Clonality	Polyclonal (goat origin)
Isotype	Goat Ig
Purity	Antigen affinity
Gene ID	10438
Applications	Western Blot : 0.1-0.3ug/ml ELISA (peptide) LOD : 1:128000
Limitations	This C1D antibody is available for research use only.



Western blot testing of human skeletal muscle lysate with C1D antibody at 0.1ug/ml.  
Predicted molecular weight: ~16kDa.

## Description

Additional name(s) for this target protein: Nuclear nucleic acid-binding protein C1D; Small unique nuclear receptor corepressor (SUNCOR)

## Application Notes

Optimal dilution of the C1D antibody should be determined by the researcher.

## Immunogen

Amino acids SKNASKVANKGKSKS were used as the immunogen for this C1D antibody.

## Storage

Aliquot and store the C1D antibody at -20oC.