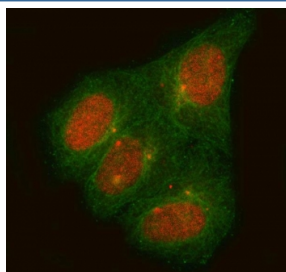


C14orf50 Antibody / PPP1R36 (RQ8068)

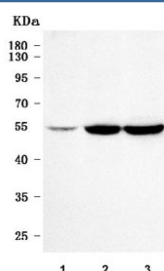
Catalog No.	Formulation	Size
RQ8068	0.5mg/ml if reconstituted with 0.2ml sterile DI water	100 ug

Bulk quote request

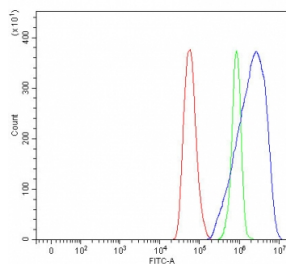
Availability	1-3 business days
Species Reactivity	Human
Format	Antigen affinity purified
Clonality	Polyclonal (rabbit origin)
Isotype	Rabbit IgG
Purity	Antigen affinity purified
Buffer	Lyophilized from 1X PBS with 2% Trehalose
UniProt	Q96LQ0
Applications	Western Blot : 0.5-1ug/ml Immunofluorescence : 5ug/ml Flow Cytometry : 1-3ug/million cells Direct ELISA : 0.1-0.5ug/ml
Limitations	This C14orf50 antibody is available for research use only.



Immunofluorescent staining of FFPE human HeLa cells with C14orf50 antibody (red) and Alpha Tubulin mAb (green). HIER: steam section in pH6 citrate buffer for 20 min.



Western blot testing of human 1) HeLa, 2) SiHa and 3) RT4 cell lysate with C14orf50 antibody. Predicted molecular weight ~49 kDa.



Flow cytometry testing of fixed and permeabilized human HeLa cells with C14orf50 antibody at 1ug/million cells (blocked with goat sera); Red=cells alone, Green=isotype control, Blue= C14orf50 antibody.

Description

PPP1R36 (protein phosphatase 1, regulatory subunit 36), also called C14orf50, is a protein-coding gene. GO annotations related to this gene include phosphatase binding and protein phosphatase inhibitor activity.

Application Notes

Optimal dilution of the C14orf50 antibody should be determined by the researcher.

Immunogen

E. coli-derived recombinant human protein (amino acids R44-D381) was used as the immunogen for the C14orf50 antibody.

Storage

After reconstitution, the C14orf50 antibody can be stored for up to one month at 4oC. For long-term, aliquot and store at -20oC. Avoid repeated freezing and thawing.