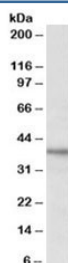


## C12orf29 Antibody (R35390)

| Catalog No.  | Formulation   | Size   |
|--------------|---|--------|
| R35390-100UG | 0.5 mg/ml in 1X TBS, pH7.3, with 0.5% BSA (US sourced) and 0.02% sodium azide | 100 ug |

[Bulk quote request](#)

|                      |  |
|----------------------|--|
| Availability         | 1-3 business days  |
| Species Reactivity   | Human  |
| Predicted Reactivity | Cow, Pig, Sheep  |
| Format               | Antigen affinity purified                                  |
| Host                 | Goat   |
| Clonality            | Polyclonal (goat origin)                                   |
| Isotype              | Goat Ig  |
| Purity               | Antigen affinity   |
| Gene ID              | 91298  |
| Applications         | Western Blot : 1-3ug/ml<br>ELISA (peptide) LOD : 1:4000    |
| Limitations          | This C12orf29 antibody is available for research use only. |



Western blot testing of HeLa lysate with C12orf29 antibody at 1ug/ml.  
Predicted/observed molecular weight: ~38kDa.

### Description

Additional name(s) for this target protein: Chromosome 12 open reading frame 29, CL029

### Application Notes

Optimal dilution of the C12orf29 antibody should be determined by the researcher.

1. This C12orf29 antibody is specific for isoforms 1 and 3.

## **Immunogen**

Amino acids QPFKVLATETVSHK were used as the immunogen for this C12orf29 antibody.

## **Storage**

Aliquot and store the C12orf29 antibody at -20oC.