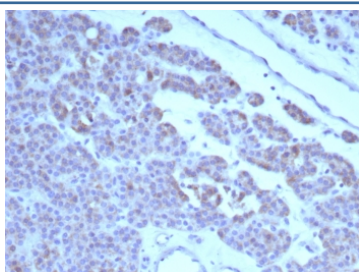


c-RET Antibody [clone RET/8791] (V4093)

| Catalog No. | Formulation | Size |
|----------------|---|--------|
| V4093-100UG | 0.2 mg/ml in 1X PBS with 0.1 mg/ml BSA (US sourced), 0.05% sodium azide | 100 ug |
| V4093-20UG | 0.2 mg/ml in 1X PBS with 0.1 mg/ml BSA (US sourced), 0.05% sodium azide | 20 ug |
| V4093SAF-100UG | 1 mg/ml in 1X PBS; BSA free, sodium azide free | 100 ug |

[Bulk quote request](#)

| | |
|---------------------------|---|
| Availability | 1-3 business days |
| Species Reactivity | Human |
| Format | Purified |
| Clonality | Monoclonal (mouse origin) |
| Isotype | Mouse IgG2c, kappa |
| Clone Name | RET/8791 |
| Purity | Protein A/G affinity |
| UniProt | P07949 |
| Localization | Membrane |
| Applications | Immunohistochemistry (FFPE) : 1-2ug/ml for 30 minutes at RT |
| Limitations | This c-RET antibody is available for research use only. |



IHC staining of FFPE human parathyroid tissue with c-RET antibody (clone RET/8791).
 HIER: boil tissue sections in pH 9 10mM Tris with 1mM EDTA for 20 min and allow to cool before testing.

Description

The Ret proto-oncogene is structurally related to the growing family of tyrosine kinase transmembrane receptors and is involved in GDNF signaling. RET expression is reported in several regions of the central nervous system; in the developing cranial nerve ganglia and a subset of cells within dorsal root ganglia, in motor neurons in the spinal cord and hindbrain, in neuro-retina and the growing tips of the renal collecting ducts in developing kidney. Alterations in RET gene

are associated with diseases including papillary thyroid carcinoma, multiple endocrine neoplasia (type 2A and 2B), familial medullary thyroid carcinoma, and a congenital developmental disorder known as Hirschsprung's disease.

Application Notes

Optimal dilution of the c-RET antibody should be determined by the researcher.

Immunogen

A recombinant partial protein (within amino acids 702-848) from the human protein was used as the immunogen for the c-RET antibody.

Storage

Aliquot the c-RET antibody and store frozen at -20°C or colder. Avoid repeated freeze-thaw cycles.