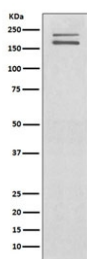


c-Ret Antibody [clone FIF-18] (RQ5197)

Catalog No.	Formulation	Size
RQ5197	Antibody in PBS with 0.02% sodium azide, 50% glycerol and 0.4-0.5mg/ml BSA	100 ul

[Bulk quote request](#)

Availability	1-2 weeks
Species Reactivity	Human
Format	Purified
Clonality	Rabbit Monoclonal
Isotype	Rabbit IgG
Clone Name	FIF-18
Purity	Affinity purified
UniProt	P07949
Applications	Western Blot : 1:500-1:2000
Limitations	This c-Ret antibody is available for research use only.



Western blot testing of human SH-SY5Y cell lysate with c-Ret antibody. Expected molecular weight: 150, 170 kDa.

Description

The RET gene encodes a transmembrane receptor and member of the tyrosine protein kinase family of proteins. Binding of ligands such as GDNF (glial cell-line derived neurotrophic factor) and other related proteins to the encoded receptor stimulates receptor dimerization and activation of downstream signaling pathways that play a role in cell differentiation, growth, migration and survival. The encoded receptor is important in development of the nervous system, and the development of organs and tissues derived from the neural crest. This proto-oncogene can undergo oncogenic activation through both cytogenetic rearrangement and activating point mutations. Mutations in this gene are associated with Hirschsprung disease and central hypoventilation syndrome and have been identified in patients with renal agenesis.

[RefSeq]

Application Notes

Optimal dilution of the c-Ret antibody should be determined by the researcher.

Immunogen

A synthetic peptide specific to human c-Ret was used as the immunogen for the c-Ret antibody.

Storage

Store the c-Ret antibody at -20oC.