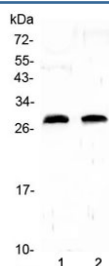


C-Reactive Protein Antibody (RQ4438)

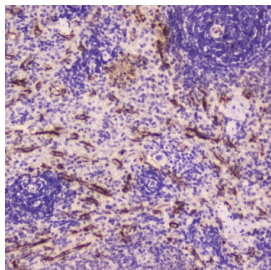
Catalog No.	Formulation	Size
RQ4438	0.5mg/ml if reconstituted with 0.2ml sterile DI water	100 ug

Bulk quote request

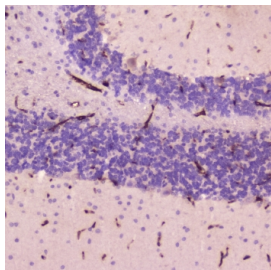
Availability	1-3 business days
Species Reactivity	Rat
Format	Antigen affinity purified
Host	Rabbit
Clonality	Polyclonal (rabbit origin)
Isotype	Rabbit IgG
Purity	Antigen affinity
Buffer	Lyophilized from 1X PBS with 2% Trehalose and 0.025% sodium azide
UniProt	P48199
Localization	Secreted
Applications	Western Blot : 0.5-1ug/ml Immunohistochemistry (FFPE) : 1-2ug/ml Direct ELISA : 0.1-0.5ug/ml (rat recombinant protein)
Limitations	This C-Reactive Protein antibody is available for research use only.



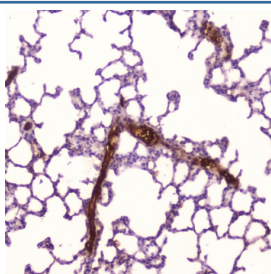
Western blot testing of 1) rat heart and 2) rat lung lysate with C-Reactive Protein antibody at 0.5ug/ml. Predicted molecular weight ~26 kDa.



IHC testing of FFPE human spleen tissue with C-Reactive Protein antibody at 2ug/ml. HIER: boil tissue sections in pH6, 10mM citrate buffer, for 10-20 min followed by cooling at RT for 20 min.



IHC testing of FFPE human cerebellum tissue with C-Reactive Protein antibody at 2ug/ml. HIER: boil tissue sections in pH6, 10mM citrate buffer, for 10-20 min followed by cooling at RT for 20 min.



IHC testing of FFPE human lung tissue with C-Reactive Protein antibody at 2ug/ml. HIER: boil tissue sections in pH6, 10mM citrate buffer, for 10-20 min followed by cooling at RT for 20 min.

Description

C Reactive Protein (CRP) is a major acute phase reactant synthesized primarily in the liver hepatocytes. It is composed of 5 identical, 21,500-molecular weight subunits. CRP mediates activities associated with preimmune nonspecific host resistance. CRP shows the strongest association with cardiovascular events. It is detectable on the surface of about 4% of normal peripheral blood lymphocytes. Acute phase reactant CRP is produced in the liver.

Application Notes

Optimal dilution of the C-Reactive Protein antibody should be determined by the researcher.

Immunogen

Rat C-Reactive Protein recombinant protein (amino acids H20-S230) was used as the immunogen for the C-Reactive Protein antibody.

Storage

After reconstitution, the C-Reactive Protein antibody can be stored for up to one month at 4oC. For long-term, aliquot and store at -20oC. Avoid repeated freezing and thawing.

