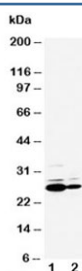


C Reactive Protein Antibody (R30203)

Catalog No.	Formulation	Size
R30203	0.5mg/ml if reconstituted with 0.2ml sterile DI water	100 ug

Bulk quote request

Availability	1-3 business days
Species Reactivity	Human
Format	Antigen affinity purified
Clonality	Polyclonal (rabbit origin)
Isotype	Rabbit IgG
Purity	Antigen affinity
Buffer	Lyophilized from 1X PBS with 2.5% BSA and 0.025% sodium azide/thimerosal
UniProt	P02741
Applications	Western Blot : 0.5-1ug/ml
Limitations	This C Reactive Protein antibody is available for research use only.



Western blot testing of C Reactive protein antibody and Lane 1: SMMC-7721; 2: HT1080 cell lysate. Predicted molecular weight ~26 kDa.

Description

C Reactive Protein(CRP) is a major acute phase reactant synthesized primarily in the liver hepatocytes. It is composed of 5 identical, 21,500-molecular weight subunits. CRP mediates activities associated with preimmune nonspecific host resistance. CRP shows the strongest association with cardiovascular events. It is detectable on the surface of about 4% of normal peripheral blood lymphocytes. Acute phase reactant CRP is produced in the liver.

Application Notes

The stated application concentrations are suggested starting amounts. Titration of the C Reactive Protein antibody may be required due to differences in protocols and secondary/substrate sensitivity.

Immunogen

An amino acid sequence from the C-terminus of human C Reactive protein (KYEYQGEVFTKPQLWP) was used as the immunogen for this C Reactive Protein antibody.

Storage

After reconstitution, the C Reactive Protein antibody can be stored for up to one month at 4°C. For long-term, aliquot and store at -20°C. Avoid repeated freezing and thawing.