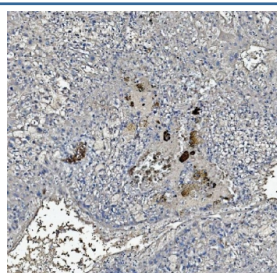


C Reactive Protein Antibody / CRP (RQ4555)

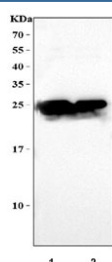
Catalog No.	Formulation	Size
RQ4555	0.5mg/ml if reconstituted with 0.2ml sterile DI water	100 ug

Bulk quote request

Availability	1-3 business days
Species Reactivity	Human
Format	Antigen affinity purified
Clonality	Polyclonal (rabbit origin)
Isotype	Rabbit IgG
Purity	Antigen affinity purified
Buffer	Lyophilized from 1X PBS with 2% Trehalose and 0.025% sodium azide
UniProt	P02741
Localization	Cytoplasmic, extracellular
Applications	Western Blot : 0.5-1ug/ml Immunohistochemistry (FFPE) : 2-5ug/ml
Limitations	This C Reactive Protein antibody is available for research use only.



IHC staining of FFPE human liver cancer tissue with C Reactive Protein antibody. HIER: boil tissue sections in pH8 EDTA for 20 min and allow to cool before testing.



Western blot testing of human recombinant protein at 1) 10ng/lane and 2) 5ng/lane with C Reactive Protein antibody at 0.5ug/ml. Predicted molecular weight ~26 kDa.

Description

C Reactive Protein (CRP) is a major acute phase reactant synthesized primarily in the liver hepatocytes. It is composed of 5 identical, 21,500-molecular weight subunits. CRP mediates activities associated with preimmune nonspecific host resistance. CRP shows the strongest association with cardiovascular events. It is detectable on the surface of about 4% of normal peripheral blood lymphocytes. Acute phase reactant CRP is produced in the liver.

Application Notes

Optimal dilution of the C Reactive Protein antibody should be determined by the researcher.

Immunogen

Amino acids QTDMSRKAFVFPKESDTSYVSLKAPLTKPLKA were used as the immunogen for the C Reactive Protein antibody.

Storage

After reconstitution, the C Reactive Protein antibody can be stored for up to one month at 4oC. For long-term, aliquot and store at -20oC. Avoid repeated freezing and thawing.