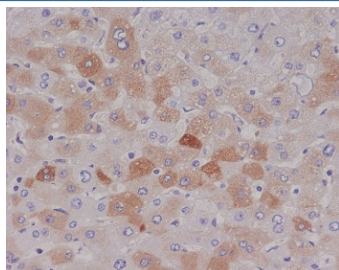


## C Reactive Protein Antibody / CRP [clone CFI-3] (RQ5005)

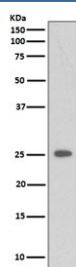
Catalog No.	Formulation	Size
RQ5005	Antibody in PBS with 0.02% sodium azide, 50% glycerol and 0.4-0.5mg/ml BSA	100 ul

[Bulk quote request](#)

Availability	1-2 weeks
Species Reactivity	Human
Format	Purified
Host	Rabbit
Clonality	Rabbit Monoclonal
Isotype	Rabbit IgG
Clone Name	CFI-3
Purity	Affinity purified
UniProt	P02741
Applications	Western Blot : 1:1000-1:2000 Immunohistochemistry (FFPE) : 1:500-1:1000
Limitations	This C Reactive Protein antibody is available for research use only.



IHC staining of FFPE human liver with C Reactive Protein antibody. HIER: boil tissue sections in pH6, 10mM citrate buffer, for 10-20 min and allow to cool before testing.



Western blot testing of lysate from human 293 cells treated with Etoposide, with C Reactive Protein antibody. Predicted molecular weight ~26 kDa.

## Description

The protein encoded by the CRP gene belongs to the pentaxin family. It is involved in several host defense related functions based on its ability to recognize foreign pathogens and damaged cells of the host and to initiate their elimination by interacting with humoral and cellular effector systems in the blood. Consequently, the level of this protein in plasma increases greatly during acute phase response to tissue injury, infection, or other inflammatory stimuli. [RefSeq]

## Application Notes

Optimal dilution of the C Reactive Protein antibody should be determined by the researcher.

## Immunogen

A synthetic peptide specific to human C Reactive Protein / CRP was used as the immunogen for the C Reactive Protein antibody.

## Storage

Store the C Reactive Protein antibody at -20oC.