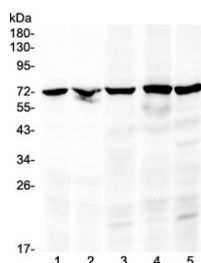


c-Raf Antibody / Raf1 (R32838)

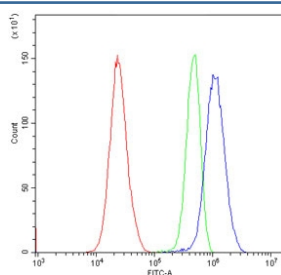
Catalog No.	Formulation	Size
R32838	0.5mg/ml if reconstituted with 0.2ml sterile DI water	100 ug

Bulk quote request

Availability	1-3 business days
Species Reactivity	Human, Mouse, Rat
Format	Antigen affinity purified
Host	Rabbit
Clonality	Polyclonal (rabbit origin)
Isotype	Rabbit IgG
Purity	Antigen affinity
Buffer	Lyophilized from 1X PBS with 2.5% BSA, 0.025% sodium azide
UniProt	P04049
Applications	Western Blot : 0.5-1ug/ml Flow Cytometry : 1-3ug/10 ⁶ cells
Limitations	This c-Raf antibody is available for research use only.



Western blot testing of 1) rat kidney, 2) mouse kidney, 3) human MCF7, 4) human 22RV1 and 5) human HeLa lysate with c-Raf antibody at 0.5ug/ml. Predicted molecular weight ~73 kDa.



Flow cytometry testing of human HeLa cells with c-Raf antibody at 1ug/10⁶ cells (blocked with goat sera); Red=cells alone, Green=isotype control, Blue= c-Raf antibody.

Description

RAF proto-oncogene serine/threonine-protein kinase, also known as proto-oncogene c-RAF, c-Raf or Raf-1, is an enzyme that in humans is encoded by the RAF1 gene. This gene is the cellular homolog of viral raf gene (v-raf). The encoded protein is a MAP kinase kinasekinase (MAP3K), which functions downstream of the Ras family of membrane associated GTPases to which it binds directly. Once activated, the cellular RAF1 protein can phosphorylate to activate the dual specificity protein kinases MEK1 and MEK2, which in turn phosphorylate to activate the serine/threonine specific protein kinases, ERK1 and ERK2. Activated ERKs are pleiotropic effectors of cell physiology and play an important role in the control of gene expression involved in the cell division cycle, apoptosis, cell differentiation and cell migration. Mutations in this gene are associated with Noonan syndrome 5 and LEOPARD syndrome 2.

Application Notes

Optimal dilution of the c-Raf antibody should be determined by the researcher.

Immunogen

A recombinant human protein corresponding to amino acids Y364-Q451 was used as the immunogen for the c-Raf antibody.

Storage

After reconstitution, the c-Raf antibody can be stored for up to one month at 4oC. For long-term, aliquot and store at -20oC. Avoid repeated freezing and thawing.