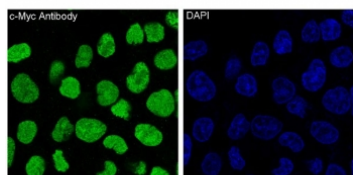


c-Myc Antibody [clone AHI-13] (RQ4860)

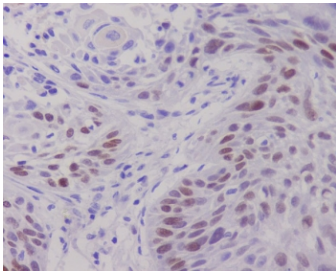
Catalog No.	Formulation	Size
RQ4860	Antibody in PBS with 0.02% sodium azide, 50% glycerol and 0.4-0.5mg/ml BSA	100 ul

[Bulk quote request](#)

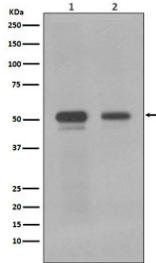
Availability	1-2 weeks
Species Reactivity	Human, Mouse, Rat
Format	Purified
Host	Rabbit
Clonality	Rabbit Monoclonal
Isotype	Rabbit IgG
Clone Name	AHI-13
Purity	Affinity purified
UniProt	P01106
Localization	Nuclear
Applications	Western Blot : 1:500-1:2000 Immunohistochemistry (FFPE) : 1:50-1:200 Immunofluorescence/Immunocytochemistry : 1:50-1:200
Limitations	This c-Myc antibody is available for research use only.



IF/ICC staining of human HeLa cells with c-Myc antibody (green) and DAPI nuclear stain (blue).



IHC staining of FFPE human lung cancer with c-Myc antibody. HIER: boil tissue sections in pH6, 10mM citrate buffer, for 10-20 min and allow to cool before testing.



Western blot testing of human 1) Jurkat and 2) K562 cell lysate with c-Myc antibody. Theoretical molecular weight: ~50 kDa but routinely observed at 50~70 kDa.

Description

Myc is a proto-oncogenic transcription factor that plays a role in cell proliferation, apoptosis and in the development of human tumors.

Application Notes

Optimal dilution of the c-Myc antibody should be determined by the researcher.

Immunogen

A synthetic peptide specific to human c-Myc / MYC was used as the immunogen for the c-Myc antibody.

Storage

Store the c-Myc antibody at -20°C.