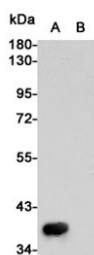


## c-Met Antibody [clone 8C10-F6-C11] (F54057)

Catalog No.	Formulation	Size
F54057-0.1ML	In PBS with 50% glycerol and 0.03% ProClin 300	0.1 ml

**Bulk quote request**

<b>Availability</b>	1-3 business days
<b>Species Reactivity</b>	Human
<b>Format</b>	Purified
<b>Clonality</b>	Monoclonal (mouse origin)
<b>Isotype</b>	Mouse IgG2a
<b>Clone Name</b>	8C10-F6-C11
<b>Purity</b>	Protein G affinity
<b>UniProt</b>	P08581
<b>Applications</b>	Western Blot : 1:1000 (transfected lysate)
<b>Limitations</b>	This c-Met antibody is available for research use only.



Western blot testing of c-Met A) transfected (partial protein) and (B) untransfected CHO-K1 cell lysate with c-Met antibody at 1:1000. Predicted molecular weight of the transfected partial: ~38 kDa.

## Description

Receptor for hepatocyte growth factor and scatter factor. Has a tyrosine-protein kinase activity. Functions in cell proliferation, scattering, morphogenesis and survival.

## Application Notes

The stated application concentrations are suggested starting points. Titration of the c-Met antibody may be required due to differences in protocols and secondary/substrate sensitivity.

## Immunogen

A human recombinant protein was used as the immunogen for this c-Met antibody.

## **Storage**

Store the c-Met antibody at -20oC.