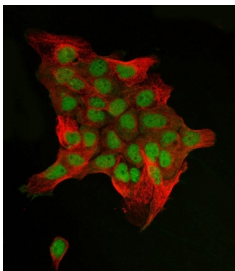


c-Jun Antibody / JUN (RQ7005)

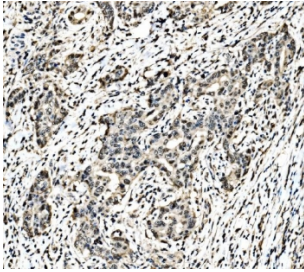
Catalog No.	Formulation	Size
RQ7005	0.5mg/ml if reconstituted with 0.2ml sterile DI water	100 ug

Bulk quote request

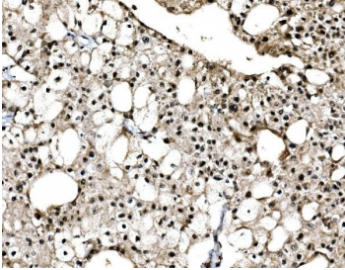
Availability	1-3 business days
Species Reactivity	Human
Format	Antigen affinity purified
Host	Rabbit
Clonality	Polyclonal (rabbit origin)
Isotype	Rabbit IgG
Purity	Antigen affinity purified
Buffer	Lyophilized from 1X PBS with 2% Trehalose
UniProt	P05412
Localization	Nuclear
Applications	Western Blot : 0.5-1 ug/ml Immunohistochemistry (FFPE) : 2-5ug/ml Immunofluorescence : 5ug/ml Flow Cytometry : 1-3ug/million cells Direct ELISA : 0.1-0.5ug/ml
Limitations	This c-Jun antibody is available for research use only.



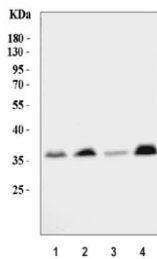
Immunofluorescent staining of FFPE human A431 cells with c-Jun antibody (green) and Beta Tubulin antibody (red). HIER: steam section in pH6 citrate buffer for 20 min.



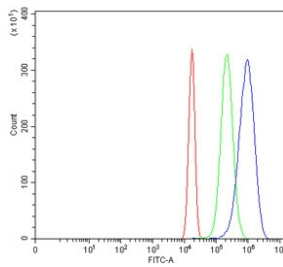
IHC staining of FFPE human renal pelvis squamous metaplasia tissue with c-Jun antibody. HIER: boil tissue sections in pH8 EDTA for 20 min and allow to cool before testing.



IHC staining of FFPE human renal cell carcinoma tissue with c-Jun antibody. HIER: boil tissue sections in pH8 EDTA for 20 min and allow to cool before testing.



Western blot testing of human 1) HeLa, 2) K562, 3) Jurkat and 4) U-87 MG cell lysate with c-Jun antibody. Predicted molecular weight ~36 kDa, commonly observed at 36-43 kDa.



Flow cytometry testing of human U-2 OS cells with c-Jun antibody at 1ug/million cells (blocked with goat sera); Red=cells alone, Green=isotype control, Blue= c-Jun antibody.

Description

c-Jun is a protein that in humans is encoded by the JUN gene. This gene is the putative transforming gene of avian sarcoma virus 17. It encodes a protein which is highly similar to the viral protein, and which interacts directly with specific target DNA sequences to regulate gene expression. This gene is intronless and is mapped to 1p32-p31, a chromosomal region involved in both translocations and deletions in human malignancies.

Application Notes

Optimal dilution of the c-Jun antibody should be determined by the researcher.

Immunogen

Recombinant human protein (amino acids K35-F331) was used as the immunogen for the c-Jun antibody.

Storage

After reconstitution, the c-Jun antibody can be stored for up to one month at 4°C. For long-term, aliquot and store at -20°C. Avoid repeated freezing and thawing.

