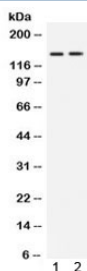


## c-Abl Antibody / ABL1 (R31857)

Catalog No.	Formulation	Size
R31857	0.5mg/ml if reconstituted with 0.2ml sterile DI water	100 ug

**Bulk quote request**

<b>Availability</b>	1-3 business days
<b>Species Reactivity</b>	Human, Rat
<b>Format</b>	Antigen affinity purified
<b>Clonality</b>	Polyclonal (rabbit origin)
<b>Isotype</b>	Rabbit IgG
<b>Purity</b>	Antigen affinity
<b>Buffer</b>	Lyophilized from 1X PBS with 2.5% BSA and 0.025% sodium azide
<b>UniProt</b>	P00519
<b>Applications</b>	Western Blot : 0.1-0.5ug/ml
<b>Limitations</b>	This c-Abl antibody is available for research use only.



Western blot testing of 1) rat brain and 2) human HeLa lysate with c-Abl antibody. Expected molecular weight: routinely visualized at 123-150 kDa, observed here at ~150 kDa.

## Description

c-Abl is also called as ABL1. This gene is a proto-oncogene that encodes a protein tyrosine kinase involved in a variety of cellular processes, including cell division, adhesion, differentiation, and response to stress. The activity of the protein is negatively regulated by its SH3 domain, whereby deletion of the region encoding this domain results in an oncogene. The ubiquitously expressed protein has DNA-binding activity that is regulated by CDC2-mediated phosphorylation, suggesting a cell cycle function. This gene has been found fused to a variety of translocation partner genes in various leukemias, most notably the t(9;22) translocation that results in a fusion with the 5' end of the breakpoint cluster region gene. Alternative splicing of this gene results in two transcript variants, which contain alternative first exons that are spliced to the remaining common exons.

## Application Notes

Optimal dilution of the c-Abl antibody should be determined by the researcher.

## Immunogen

Amino acids ERIASGAITKGVVLDSTEALCLAISRNSQ of human ABL1 were used as the immunogen for the c-Abl antibody.

## Storage

After reconstitution, the c-Abl antibody can be stored for up to one month at 4°C. For long-term, aliquot and store at -20°C. Avoid repeated freezing and thawing.