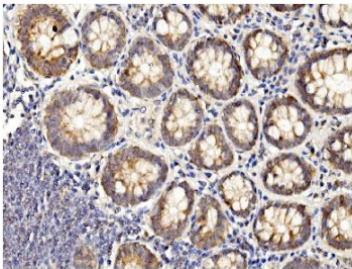


## BubR1 Antibody / BUB1B [clone 8B3] (RQ5937)

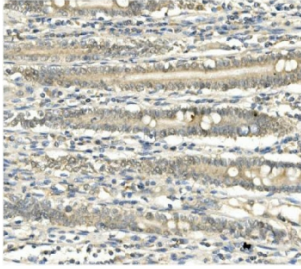
Catalog No.	Formulation	Size
RQ5937	0.5mg/ml if reconstituted with 0.2ml sterile DI water	100 ug

### Bulk quote request

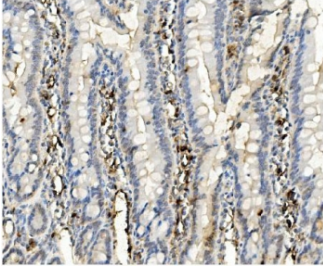
<b>Availability</b>	1-3 business days
<b>Species Reactivity</b>	Human, Rat
<b>Format</b>	Antigen affinity purified
<b>Host</b>	Mouse
<b>Clonality</b>	Monoclonal (mouse origin)
<b>Isotype</b>	Mouse IgG2b
<b>Clone Name</b>	8B3
<b>Purity</b>	Affinity purified
<b>Buffer</b>	Lyophilized from 1X PBS with 2% Trehalose and 0.025% sodium azide
<b>UniProt</b>	O60566
<b>Applications</b>	Western Blot : 0.5-1ug/ml Immunohistochemistry : 1-2ug/ml Flow Cytometry : 1-3ug/million cells
<b>Limitations</b>	This BubR1 antibody is available for research use only.



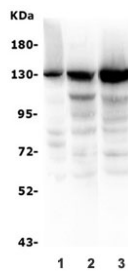
IHC staining of FFPE human rectal cancer with BubR1 antibody. HIER: boil tissue sections in pH8 EDTA for 20 min and allow to cool before testing.



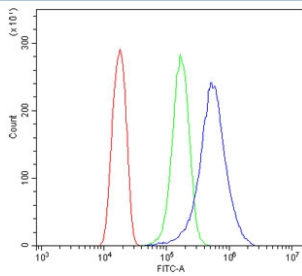
IHC staining of FFPE human rectal cancer with BubR1 antibody. HIER: boil tissue sections in pH8 EDTA for 20 min and allow to cool before testing.



IHC staining of FFPE rat intestine with BubR1 antibody. HIER: boil tissue sections in pH8 EDTA for 20 min and allow to cool before testing.



Western blot testing of human 1) HeLa, 2) HEK293 and 3) K562 lysate with BubR1 antibody. Predicted molecular weight ~120 kDa.



Flow cytometry testing of human HeLa cells with BubR1 antibody at 1ug/million cells (blocked with goat sera); Red=cells alone, Green=isotype control, Blue= BubR1 antibody.

## Description

Mitotic checkpoint serine/threonine-protein kinase BUB1 beta is an enzyme that in humans is encoded by the BUB1B gene. This gene encodes a kinase involved in spindle checkpoint function. The protein has been localized to the kinetochore and plays a role in the inhibition of the anaphase-promoting complex/cyclosome (APC/C), delaying the onset of anaphase and ensuring proper chromosome segregation. Impaired spindle checkpoint function has been found in many forms of cancer.

## Application Notes

Optimal dilution of the BubR1 antibody should be determined by the researcher.

## Immunogen

Recombinant human protein (amino acids K26-E448) was used as the immunogen for the BubR1 antibody.

## Storage

After reconstitution, the BubR1 antibody can be stored for up to one month at 4°C. For long-term, aliquot and store at -20°C. Avoid repeated freezing and thawing.

