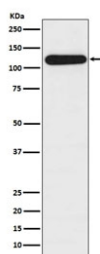


BUB1B Antibody [clone ABFG-2] (RQ4759)

Catalog No.	Formulation	Size
RQ4759	Antibody in PBS with 0.02% sodium azide, 50% glycerol and 0.4-0.5mg/ml BSA	100 ul

[Bulk quote request](#)

Availability	1-2 weeks
Species Reactivity	Human
Format	Purified
Host	Rabbit
Clonality	Rabbit Monoclonal
Isotype	Rabbit IgG
Clone Name	ABFG-2
Purity	Affinity purified
UniProt	O60566
Applications	Western Blot : 1:1000-1:5000
Limitations	This BUB1B antibody is available for research use only.



Western blot testing of human HepG2 lysate with BUB1B antibody. Predicted molecular weight ~120 kDa.

Description

'Mitotic checkpoint serine/threonine-protein kinase BUB1 beta,' also called BubR1, is an essential component of the mitotic checkpoint. Required for normal mitosis progression. The mitotic checkpoint delays anaphase until all chromosomes are properly attached to the mitotic spindle. One of its checkpoint functions is to inhibit the activity of the anaphase-promoting complex/cyclosome (APC/C) by blocking the binding of CDC20 to APC/C, independently of its kinase activity. The other is to monitor kinetochore activities that depend on the kinetochore motor CENPE. Required for kinetochore localization of CENPE. Negatively regulates PLK1 activity in interphase cells and suppresses centrosome

amplification. Also implicated in triggering apoptosis in polyploid cells that exit aberrantly from mitotic arrest. May play a role for tumor suppression. [UniProt]

Application Notes

Optimal dilution of the BUB1B antibody should be determined by the researcher.

Immunogen

A synthetic peptide specific to human BUB1B was used as the immunogen for the BUB1B antibody.

Storage

Store the BUB1B antibody at -20oC.