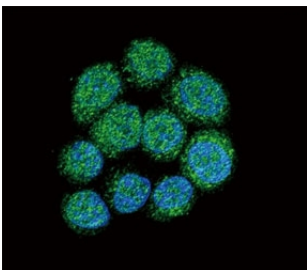


BTK Antibody (F50702)

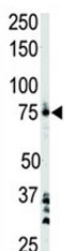
| Catalog No. | Formulation | Size |
|---------------|--|---------|
| F50702-0.4ML | In 1X PBS, pH 7.4, with 0.09% sodium azide | 0.4 ml |
| F50702-0.08ML | In 1X PBS, pH 7.4, with 0.09% sodium azide | 0.08 ml |

[Bulk quote request](#)

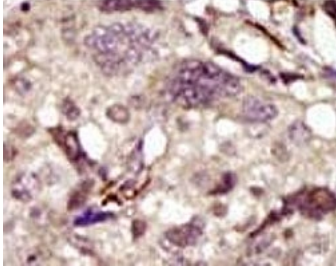
| | |
|---------------------------|--|
| Availability | 1-3 business days |
| Species Reactivity | Human |
| Format | Purified |
| Host | Rabbit |
| Clonality | Polyclonal (rabbit origin) |
| Isotype | Rabbit Ig |
| Purity | Purified |
| UniProt | Q06187 |
| Applications | Western Blot : 1:1000 Immunofluorescence : 1:10-1:50 IHC (Paraffin) : 1:50-1:100 |
| Limitations | This BTK antibody is available for research use only. |



Confocal immunofluorescent analysis of BTK antibody with 293 cells followed by Alexa Fluor 488-conjugated goat anti-rabbit IgG (green). DAPI was used as a nuclear counterstain (blue).



BTK antibody used in western blot to detect BTK in Ramos cell lysate



IHC analysis of FFPE human breast carcinoma tissue stained with the BTK antibody

Description

BTK plays a crucial role in B-cell ontogeny. This protein transiently phosphorylates GTF2I on tyrosine residues in response to B-cell receptor cross-linking. Defects in BTK are the cause of X-linked agammaglobulinemia type 1 (XLA). XLA is a humoral immunodeficiency disease which results in developmental defects in the maturation pathway of B-cells. Affected boys have normal levels of pre-B-cells in their bone marrow but virtually no circulating mature B-lymphocytes. This results in a lack of immunoglobulins of all classes and leads to recurrent bacterial infections like otitis, conjunctivitis, dermatitis, sinusitis or fatal sepsis or meningitis within the first years of life.

Application Notes

Titration of the BTK antibody may be required due to differences in protocols and secondary/substrate sensitivity.

Immunogen

A portion of amino acids 209-239 from the human protein was used as the immunogen for this BTK antibody.

Storage

Aliquot the BTK antibody and store frozen at -20°C or colder. Avoid repeated freeze-thaw cycles.