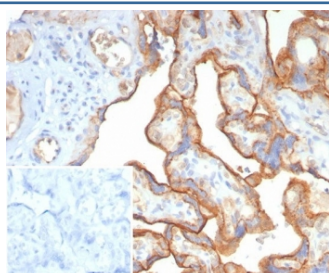


BSG Antibody / Basigin / CD147 [clone BSG/7955] (V4600)

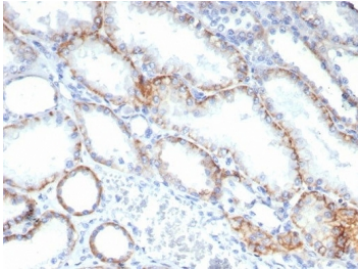
| Catalog No. | Formulation | Size |
|----------------|---|--------|
| V4600-100UG | 0.2 mg/ml in 1X PBS with 0.1 mg/ml BSA (US sourced), 0.05% sodium azide | 100 ug |
| V4600-20UG | 0.2 mg/ml in 1X PBS with 0.1 mg/ml BSA (US sourced), 0.05% sodium azide | 20 ug |
| V4600SAF-100UG | 1 mg/ml in 1X PBS; BSA free, sodium azide free | 100 ug |

[Bulk quote request](#)

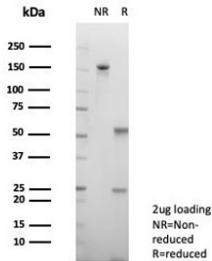
| | |
|---------------------------|--|
| Availability | 1-3 business days |
| Species Reactivity | Human |
| Format | Purified |
| Clonality | Monoclonal (mouse origin) |
| Isotype | Mouse IgG1, kappa |
| Clone Name | BSG/7955 |
| Purity | Protein A/G affinity |
| UniProt | P35613 |
| Localization | Cell surface |
| Applications | Immunohistochemistry (FFPE) : 1-2ug/ml for 30 min at RT Western Blot : 2-4ug/ml |
| Limitations | This CD147 antibody is available for research use only. |



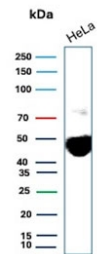
IHC staining of FFPE human placental tissue with BSG antibody (clone BSG/7955) at 2ug/ml. Inset: PBS used in place of primary Ab (secondary Ab negative control). HIER: boil tissue sections in pH 9 10mM Tris with 1mM EDTA for 20 min and allow to cool before testing.



IHC staining of FFPE human renal cell carcinoma tissue with BSG antibody (clone BSG/7955) at 2ug/ml. HIER: boil tissue sections in pH 9 10mM Tris with 1mM EDTA for 20 min and allow to cool before testing.



SDS-PAGE analysis of purified, BSA-free BSG antibody (clone BSG/7955) as confirmation of integrity and purity.



Western blot testing of human HeLa cell lysate with BSG antibody. Predicted molecular weight: ~27 kDa (unmodified), 43-66 kDa (glycosylated).

Description

BSG, also called CD147 and Emmprin, is expressed more intensely on thymocytes than on mature peripheral blood T cells. It is important in spermatogenesis, embryo implantation, neural network formation, and tumor progression. It stimulates the production of interstitial collagenase, gelatinase A, stromelysin-1 and various metalloproteinases (MMPs) by fibroblasts. These enzymes are important factors in cancer invasion and metastasis.

Application Notes

Optimal dilution of the BSG antibody should be determined by the researcher.

Immunogen

Recombinant full-length human protein was used as the immunogen for the CD147 antibody.

Storage

Aliquot the BSG antibody and store frozen at -20oC or colder. Avoid repeated freeze-thaw cycles.

