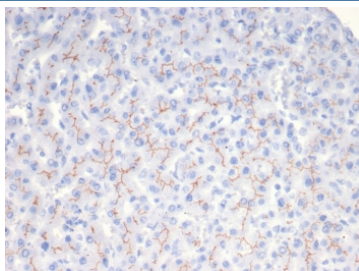


## BSEP Antibody / Bile Salt Export Pump / ABCB11 [clone BSEP/7534] (V4921)

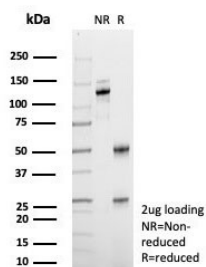
Catalog No.	Formulation	Size
V4921-100UG	0.2 mg/ml in 1X PBS with 0.1 mg/ml BSA (US sourced), 0.05% sodium azide	100 ug
V4921-20UG	0.2 mg/ml in 1X PBS with 0.1 mg/ml BSA (US sourced), 0.05% sodium azide	20 ug
V4921SAF-100UG	1 mg/ml in 1X PBS; BSA free, sodium azide free	100 ug

### Bulk quote request

Availability	1-3 business days
Species Reactivity	Human
Format	Purified
Host	Mouse
Clonality	Monoclonal (mouse origin)
Isotype	Mouse IgG
Clone Name	BSEP/7534
Purity	Protein A/G affinity
UniProt	O95342
Localization	Membrane, cytoplasm
Applications	Western Blot : 1-2ug/ml Immunohistochemistry (FFPE) : 1-2ug/ml for 30 min at RT
Limitations	This BSEP antibody is available for research use only.



IHC staining of FFPE human liver tissue with BSEP antibody (clone BSEP/7534). HIER: boil tissue sections in pH 9 10mM Tris with 1mM EDTA for 20 min and allow to cool before testing.



SDS-PAGE analysis of purified, BSA-free BSEP antibody (clone BSEP/7534) as confirmation of integrity and purity.

## Description

ATP-binding cassette (ABC) transporters are an evolutionarily conserved family of proteins that catalyze the transport of molecules across extra- and intracellular membranes through the energy of ATP hydrolysis. ABC genes comprise seven subfamilies, designated ABC1, Mdr/TAP, MRP, ALD, OABP, GCN20 and White. The secretion of bile salt molecules from blood into bile is a major driving force for bile formation. Bile salt export pump (BSEP) is a member of the Mdr/TAP subfamily of ABC transporters that mediates the transport of bile acids across the hepatocyte canalicular membrane and regulates bile acid-dependent bile secretion. BSEP contains putative phosphorylation sites for protein kinase A, protein kinase C (PKC) and Ca<sup>2+</sup>-calmodulin dependent kinase II, whose regulation may be dependent on bile salt concentration.

## Application Notes

Optimal dilution of the BSEP antibody should be determined by the researcher.

## Immunogen

A recombinant partial protein sequence (within amino acids 600-800) from the human protein was used as the immunogen for the BSEP antibody.

## Storage

Aliquot the BSEP antibody and store frozen at -20°C or colder. Avoid repeated freeze-thaw cycles.