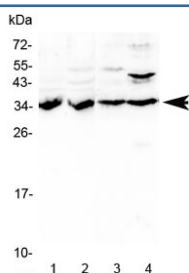


## BRMS1 Antibody (R32791)

Catalog No.	Formulation	Size
R32791	0.5mg/ml if reconstituted with 0.2ml sterile DI water	100 ug

[Bulk quote request](#)

<b>Availability</b>	1-3 business days
<b>Species Reactivity</b>	Human, Mouse, Rat
<b>Format</b>	Antigen affinity purified
<b>Host</b>	Rabbit
<b>Clonality</b>	Polyclonal (rabbit origin)
<b>Isotype</b>	Rabbit IgG
<b>Purity</b>	Antigen affinity
<b>Buffer</b>	Lyophilized from 1X PBS with 2.5% BSA, 0.025% sodium azide
<b>UniProt</b>	Q9HCU9
<b>Applications</b>	Western Blot : 0.5-1ug/ml
<b>Limitations</b>	This BRMS1 antibody is available for research use only.



Western blot testing of 1) rat kidney, 2) rat liver, 3) mouse liver and 4) human HeLa lysate with BRMS1 antibody at 0.5ug/ml. Predicted molecular weight ~28 kDa, often observed at ~35 kDa.

## Description

Breast cancer metastasis-suppressor 1 is a protein that in humans is encoded by the BRMS1 gene. This gene reduces the metastatic potential, but not the tumorigenicity, of human breast cancer and melanoma cell lines. The protein encoded by this gene localizes primarily to the nucleus and is a component of the mSin3a family of histone deacetylase complexes (HDAC). The protein contains two coiled-coil motifs and several imperfect leucine zipper motifs. Alternative splicing results in two transcript variants encoding different isoforms.

## Application Notes

Optimal dilution of the BRMS1 antibody should be determined by the researcher.

## Immunogen

Amino acids D52-D244 from the human protein were used as the immunogen for the BRMS1 antibody.

## Storage

After reconstitution, the BRMS1 antibody can be stored for up to one month at 4oC. For long-term, aliquot and store at -20oC. Avoid repeated freezing and thawing.