

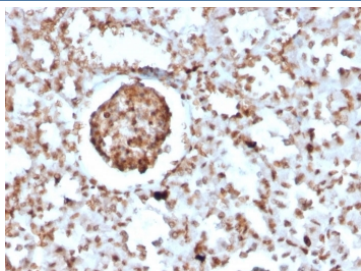
BrdU Antibody / Bromodeoxyuridine [clone BRD2888R] (V3928)

Catalog No.	Formulation	Size
V3928-100UG	0.2 mg/ml in 1X PBS with 0.1 mg/ml BSA (US sourced) and 0.05% sodium azide	100 ug
V3928-20UG	0.2 mg/ml in 1X PBS with 0.1 mg/ml BSA (US sourced) and 0.05% sodium azide	20 ug
V3928SAF-100UG	1 mg/ml in 1X PBS; BSA free, sodium azide free	100 ug

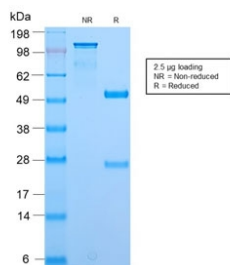
Recombinant **RABBIT MONOCLONAL**

[Bulk quote request](#)

Species Reactivity	All species
Format	Purified
Host	Rabbit
Clonality	Recombinant Rabbit Monoclonal
Isotype	Rabbit IgG
Clone Name	BRD2888R
Purity	Protein A affinity chromatography
Buffer	1X PBS, pH 7.4
Gene ID	Not Applicable
Localization	Nuclear
Applications	Immunohistochemistry (FFPE) : 0.5-1ug/ml for 30 min at RT
Limitations	This BrdU antibody is available for research use only.



IHC staining of BrdU-incorporated FFPE mouse kidney with BrdU antibody (clone BRD2888R). HIER: boil tissue sections in pH 9 10mM Tris with 1mM EDTA for 20 min and allow to cool before testing.



SDS-PAGE analysis of purified, BSA-free BrdU antibody (clone BRD2888R) as confirmation of integrity and purity.

Description

This antibody reacts with Bromodeoxyuridine (BrdU) in single stranded DNA (produced by partial denaturation of double stranded DNA), BrdU coupled to a protein carrier, as well as free BrdU. BrdU is a thymidine analog, incorporated into cell nuclei during DNA synthesis prior to mitosis. Antibody to Bromodeoxyuridine / BrdU is helpful in detecting S-phase cells, providing useful information on the aggressiveness of tumors.

Application Notes

The concentration stated for each application is a general starting point. Variations in protocols, secondaries and substrates may require the Bromodeoxyuridine / BrdU antibody to be titrated up or down for optimal performance.

1. For staining of formalin-fixed tissues, incubate sections in 4N HCl for 30 minutes at RT followed by digestion with trypsin at 1mg/ml PBS, 10 min at 37°C.

Immunogen

BrdU / Bromodeoxyuridine conjugated to KLH was used as the immunogen for this BrdU antibody.

Storage

Store the BrdU antibody at 2-8°C (with azide) or aliquot and store at -20°C or colder (without azide).

Alternate Names

Bromodeoxyuridine, BUdr, BrdU antibody