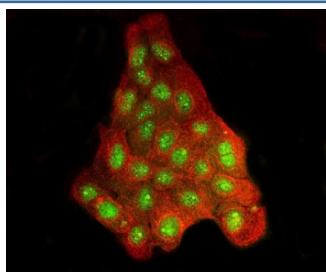


## BRD2 Antibody (RQ5960)

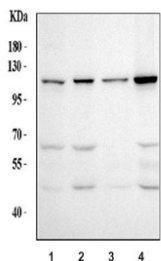
| Catalog No. | Formulation   | Size   |
|-------------|---|--------|
| RQ5960      | 0.5mg/ml if reconstituted with 0.2ml sterile DI water | 100 ug |

**Bulk quote request**

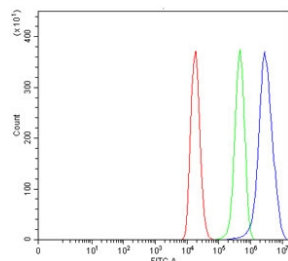
|                           |   |
|---------------------------|---|
| <b>Availability</b>       | 1-3 business days   |
| <b>Species Reactivity</b> | Human   |
| <b>Format</b>             | Antigen affinity purified   |
| <b>Clonality</b>          | Polyclonal (rabbit origin)  |
| <b>Isotype</b>            | Rabbit IgG  |
| <b>Purity</b>             | Affinity purified   |
| <b>Buffer</b>             | Lyophilized from 1X PBS with 2% Trehalose   |
| <b>UniProt</b>            | P25440  |
| <b>Localization</b>       | Nuclear   |
| <b>Applications</b>       | Western Blot : 0.5-1ug/ml<br>Immunofluorescence : 5ug/ml<br>Flow Cytometry : 1-3ug/million cells<br>Direct ELISA : 0.1-0.5ug/ml |
| <b>Limitations</b>        | This BRD2 antibody is available for research use only.  |



Immunofluorescent staining of FFPE human A431 cells with BRD2 antibody (green) and Tubulin beta mAb (red). HIER: steam section in pH6 citrate buffer for 20 min.



Western blot testing of human 1) HeLa, 2) A431, 3) Jurkat and 4) 293T cell lysate with BRD2 antibody. Expected molecular weight: 88-110 kDa.



Flow cytometry testing of human 293T cells with BRD2 antibody at 1ug/million cells (blocked with goat sera); Red=cells alone, Green=isotype control, Blue= BRD2 antibody.

## Description

Bromodomain-containing protein 2 is a protein that in humans is encoded by the BRD2 gene. It is mapped to 6p21.32. This gene encodes a transcriptional regulator that belongs to the BET (bromodomains and extra terminal domain) family of proteins. This protein associates with transcription complexes and with acetylated chromatin during mitosis, and it selectively binds to the acetylated lysine-12 residue of histone H4 via its two bromodomains. The gene maps to the major histocompatibility complex (MHC) class II region on chromosome 6p21.3, but sequence comparison suggests that the protein is not involved in the immune response. This gene has been implicated in juvenile myoclonic epilepsy, a common form of epilepsy that becomes apparent in adolescence. Multiple alternatively spliced variants have been described for this gene.

## Application Notes

Optimal dilution of the BRD2 antibody should be determined by the researcher.

## Immunogen

Recombinant human protein (amino acids M1-Q214) was used as the immunogen for the BRD2 antibody.

## Storage

After reconstitution, the BRD2 antibody can be stored for up to one month at 4°C. For long-term, aliquot and store at -20°C. Avoid repeated freezing and thawing.