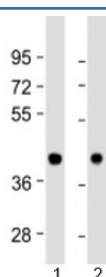


## BRCC36 Antibody (F53844)

Catalog No.	Formulation	Size
F53844-0.2ML	In 1X PBS, pH 7.4, with 0.09% sodium azide	0.2 ml
F53844-0.05ML	In 1X PBS, pH 7.4, with 0.09% sodium azide	0.05 ml

[Bulk quote request](#)

<b>Availability</b>	1-3 business days
<b>Species Reactivity</b>	Human
<b>Format</b>	Antigen affinity purified
<b>Clonality</b>	Polyclonal (rabbit origin)
<b>Isotype</b>	Rabbit Ig
<b>Purity</b>	Antigen affinity
<b>UniProt</b>	P46736
<b>Applications</b>	Western Blot : 1:500-1000
<b>Limitations</b>	This BRCC36 antibody is available for research use only.



Western blot testing of human 1) heart and 2) brain lysate with BRCC36 antibody at 1:1000. Predicted molecular weight: 36 kDa.

## Description

BRCA1/BRCA2 containing complex subunit 36 is a metalloprotease that specifically cleaves 'Lys-63'- linked polyubiquitin chains. Does not have activity toward 'Lys- 48'-linked polyubiquitin chains. Component of the BRCA1-A complex, a complex that specifically recognizes 'Lys-63'-linked ubiquitinated histones H2A and H2AX at DNA lesions sites, leading to target the BRCA1-BARD1 heterodimer to sites of DNA damage at double-strand breaks (DSBs). In the BRCA1-A complex, it specifically removes 'Lys-63'-linked ubiquitin on histones H2A and H2AX, antagonizing the RNF8-dependent ubiquitination at double- strand breaks (DSBs). Catalytic subunit of the BRISC complex, a multiprotein complex that specifically cleaves 'Lys-63'-linked ubiquitin in various substrates. Mediates the specific 'Lys-63'- specific deubiquitination associated with the COP9 signalosome complex (CSN), via the interaction of the BRISC complex with the CSN complex.

## Application Notes

Titration of the BRCC36 antibody may be required due to differences in protocols and substrate sensitivity.

## Immunogen

A portion of amino acids 36-70 from the human protein was used as the immunogen for the BRCC36 antibody.

## Storage

Aliquot the BRCC36 antibody and store frozen at -20oC or colder. Avoid repeated freeze-thaw cycles.