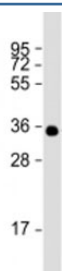


BRCA2 Antibody [clone 1643CT739.91.87] (F53811)

Catalog No.	Formulation	Size
F53811-0.2ML	In 1X PBS, pH 7.4, with 0.09% sodium azide	0.2 ml
F53811-0.05ML	In 1X PBS, pH 7.4, with 0.09% sodium azide	0.05 ml

[Bulk quote request](#)

Availability	1-3 business days
Species Reactivity	Human
Format	Purified
Clonality	Monoclonal (mouse origin)
Isotype	Mouse IgG1, kappa
Clone Name	1643CT739.91.87
Purity	Protein G affinity chromatography
UniProt	P51587
Applications	Western Blot : 1:1000-2000
Limitations	This BRCA2 antibody is available for research use only.



Western blot testing of human recombinant partial protein with BRCA2 antibody at 1:2000.

Description

Breast cancer type 2 susceptibility protein is involved in double-strand break repair and/or homologous recombination. Binds RAD51 and potentiates recombinational DNA repair by promoting assembly of RAD51 onto single-stranded DNA (ssDNA).

Application Notes

Titration of the BRCA2 antibody may be required due to differences in protocols and substrate sensitivity.

Immunogen

A human recombinant protein of amino acids 251-495 was used as the immunogen for the BRCA2 antibody.

Storage

Aliquot the BRCA2 antibody and store frozen at -20oC or colder. Avoid repeated freeze-thaw cycles.